

Merger of Middleton Park Primary / Glashieburn Primary

On numbers alone, the existing Glashieburn building would and could not cope with the joint number of pupils. It could not provide suitable classroom space required for modern educational methods and the new Curriculum of Excellence; let alone dedicated space for the increase in Physical Activities Time recommended by Government and Health Authorities.

Is this your modern education: -

- To see pupils taught in corridors.
- To see gym classes held in classrooms or dining hall
- To see pupils eating lunch in adjoining corridors due to lack of dining space, with little or no food choice for those at the end of an obvious longer queue.

I understand from parents with children currently at Glashieburn that the kitchens cannot cope with present numbers!!!

- To see health risks due to inadequate toilet/washing facilities.

Walking distance to Glashieburn will be too far, especially in winter, for younger children from the outer catchment areas of Middleton Park Primary. There are, already, daily parking problems outside Glashieburn School; but at a recent meeting this was dismissed and parents told they could park at Asda. Where we live, in the Shire, to park in a store's car park other than to shop there incurs fines. Are you prepared to pay such fines for parents you have told to park at Asda?

Quite frankly, your proposals appear to be ill thought out -
"A quart into a pint pot." Leave the two schools alone.
Consign your plans where they belong - THE BIN.

Signed

Concerned Grandparents.

1st October 2013

Dear Sir / Madam

Public Consultation Document to close Glashieburn and Middleton Park Schools and establish an amalgamated school within the existing Glashieburn Building

I have 2 children who currently attend Middleton Park Primary. One child in Primary 3 and another in pre-school nursery. Following my review of the above mentioned document I personally write to you in order to express my grave concern for the future education of my children should the above proposals take place.

Having read the document in detail it concerns me greatly that the content contains what can only be described as inaccuracies, fabricated figures, grammatical errors, contradictions and worst of all a proposal, which will have no educational benefit to my children.

I have many concerns however the major contributing factor to my dismay is, without doubt, the space issue. The curriculum for excellence emphasises the need for varied learning and in order to deliver on this, space is of paramount importance. I ask you, how can the parents of Glashieburn and Middleton Park be assured that the council can deliver on these standards when under the proposals the new amalgamated school would give our children the smallest internal space per child of all the schools in the city. This is not of educational benefit to our children.

I recently attended one of the council's public meetings at the Jesmond Centre and having been alarmed by the consultation document I was hoping to be re-assured by the meeting and what the panel had to say. May I take this opportunity to say I was utterly disgusted and disappointed. It was crystal clear that the panel were not there to answer questions and on some occasions were extremely patronising in their response. I personally posed the question...

Q. What changes have the council made to Glashieburn school that have resulted in its suitability rating changing from a C rating (in the Nursery/Primary School Estate review document presented to the Education, Culture and Sport Committee in February this year) to a B rating in the above mentioned document?

Charlie Penman replied by stating

A. The head teachers for each school give the rating but they cannot compare their school with the others in the city therefore in order to ensure consistency and a fair approach the council review the head teachers rating based on the standards across the city and amend it to suit.

I replied....

Q. but in that case the council reviewed the rating for the review document and gave Glashieburn a C and then again around 6 months later they reviewed the rating again and gave Glashieburn a B. Therefore I asked again what specific changes had the council made to Glashieburn school in order to change its rating from a C to a B over such a short space of time.

Charlie Penman disappointingly and unprofessionally replied....

A. I don't know.

How can the parents and pupils of both schools:-

1. Be re-assured by that kind of response.
2. Believe that Glashieburn is now worthy of receiving a B rating and has not just been changed to help push the proposal through.
3. Trust or have faith in the process.
4. Believe that this will be of education benefit to our children.

May I now take the opportunity to go through the document page for page raising questions, outlining the issues associated with the proposal and supporting my statements above which bring the documents credibility and validity into question.

Page 7, Section 1.8, paragraph 2 – Education Scotland's Report

How will this report be made available?

In what circumstances and at which point would the decision to proceed or not proceed with amalgamation go to full committee?

Page 7, Section 1.9, paragraph 2 – Involvement of Scottish Ministers

How do individuals request to make representations to the Scottish ministers?

Page 10, Section 2.1, paragraph 11 – Improving the Learning Environment for all Pupils

What improved opportunities will the amalgamated school provide that are different to those already on offer at Middleton Park and Glashieburn?

Page 11, Section 2.1, Bullet 2 – Improvement in Transitions

Will there be room for 100 nursery children in Burst Primary?

How do the council propose to improve transition between nursery and primary for session 2014 /2015 given next year's Primary 1's are currently starting transition within Middleton Park school?

Page 11, Section 2.1, Bullet 3 – Increased pool of resources / greater opportunities

Due to current technology there is no need for children and staff to be crammed together in order to benefit from the pool of teaching resources. Ideas are already shared between teaching staff within the Oldmachar ASG. Last week we had the Forehill Nursery teacher spectating in Middleton Park nursery by way of sharing ideas. This is a primary example of how our ASG schools already benefit from the pool of teaching resources without the need to be squeezed into one building.

Page 11, Section 2.1, Bullet 5 – Active Schools

How can an amalgamated school provide health through fitness when there is a severe lack of outdoor space for the numbers of children attending the new school? The February suitability tables showed Glashieburn external social areas and facilities fall well below those at Middleton Park.

Page 11, Section 2.2, paragraph 1 – Rationale for closing Middleton Park

My understanding is phase 1:- scattering of existing houses within Grandhome would be zoned for Bucksburn. Phase 2:- Upon building work starting, Grandhome would be re-zoned for Danestone until Grandhome School built. Phase 3:- Grandhome re-zoned for Grandhome new school in Grandhome estate. Phase 2 within this report therefore re-zones Grandhome children to Danestone therefore Middleton Park would not exceed capacity by 2018. If you take Grandhome out of the equation then there is no need to close Middleton Park as you have removed the very issue identified as the reason to close the school.

Page 11, Section 2.2, paragraph 2 – The need for change

If a straight forward solution is to increase provision at Middleton Park why can't we do this to accommodate Glashieburn children into the Middleton Park site?

Page 11, Section 2.2, paragraph 4 – Alternative solution

Cramming children into an existing building which requires significant upgrades to bring it close to Middleton Park and not even close to 3r status is not a sensible option.

What are the specific advantages of an amalgamated school in this case?

Page 11, Section 2.2, paragraph 5 – Middleton Park roll

The current roll at Middleton park is high therefore can you explain why the roll would fall once the Grandhome estate school is built? Surely our roll would at least remain the same?

Page 12, Section 2.3, Bullet 1 – Transformation programme objectives

Unfortunately under these proposals Burst primary will not have a school building fit for the 21st century.

Page 12, Section 2.3, Bullet 2 – Extracurricular activities

What extra-curricular activities would pupils benefit from in Burst Primary and how different are they to what we already have at Middleton Park and Glashieburn Schools?

Page 12, Section 2.3, Bullet 3 – Transformation programme objectives

If one of the councils transformation programme objectives is to increase the number of pupils attending new or refurbished schools then why is Burst primary only having minor internal alterations? Surely the suitability assessment undertaken illustrates that the school needs so much more than this to deliver on the above statement.

Page 12, Section 2.3, Bullet 4 – Investment in staff equipment and accommodation

This proposal clearly highlights there will not be the appropriate investment in accommodation for Burst Primary pupils.

Page 13, Section 2.5.1, paragraph 1 – Curriculum for Excellence

The Local Authority has a duty of care to provide an efficient and suitable education for the children and young people within their area. In my opinion if these proposals go through the council are not fulfilling this commitment.

Page 14, Section 2.5.1, paragraph 3 – Transitions

How will this transition occur for Burst Primary?

Page 14, Section 2.5.1, paragraph 4 – Active Learning

How can active learning take place in a school where all free space must be taken up by classrooms to accommodate the vast numbers of children and whereby there is not enough external space to accommodate all children?

Page 14, Section 2.5.1, paragraph 6 – Ability to deliver curriculum for excellence.

Your report states that all elements described within Section 2.5.1 mean that the formal classroom layout of many schools does not lend itself to the implementation of curriculum for excellence as the buildings and internal configurations were designed to accommodate a very different curriculum. In this case, how do the council propose to deliver curriculum for excellence in Burst Primary?

Page 15, Section 2.6, paragraph 1 – Financial Considerations

If the main driver for this proposal is not financial then what is the main driver?

Page 16, Section 2.6.3 – Condition and suitability evaluations

As above please clarify:-

1. Why Glashieburns rating has changed from a C to a B.
2. What specific changes have been made to the school since February 2013 to allow this to happen?

Page 18, Section 3.1.1 – Detailed proposals

Unfortunately this section is unclear and had to be explained at a recent public meeting. It does not explain that there are 3 phases to Grandhome re-zoning as detailed earlier in my letter. Please confirm if my understanding is correct.

Page 19, Section 3.1.1 – Maps

Map 1 and Map 2 are scaled differently and are therefore not comparable. Please provide maps of the same scale in order to allow a comparison and gain an understanding of the changes.

Page 20, Section 3.2a, Bullet 1 – Rationale for proposals

Can you describe how facilities will be improved for all pupils to provide enhanced curricular opportunities at Burst Primary?

Page 20, Section 3.2a, Bullet 2 – Middleton Park capacity

Middleton Park will not exceed its capacity by 2018 if you remove Grandhome development from the equation and even then it will only exceed its capacity by 10 children.

How is the projection model configured? It appears city wide school rolls have been wrongly projected in the past resulting in the need to do this city wide review of all school estates in Aberdeen.

Page 21, Section 3.2a, Bullet 1 – Grandhome development

This paragraph does not make sense.

Page 21, Section 3.2a, Bullet 4 – Changes to Glashieburn building

Glashieburn does not have sufficient unfilled space to accommodate all pupils from the proposed catchment area. Using your figures from this report:-

Glashieburn has a P1-P7 roll of 261 (figure taken from 5.1.10 of your report)

Middleton Park has a P1-P7 roll of 168 (figure taken from 5.2.9 of your report)

During a recent public meeting you confirmed there would be a nursery capability for 100 children. 60 morning and 40 afternoon places.

Glashieburn roll (261) + Middleton Park roll (168) + Nursery (100) = 529 – 60 (max number of nursery children in attendance at any one time) = total roll of 469. New capacity of Glashieburn building is 460 therefore the school will be immediately over capacity.

Furthermore, if no significant changes are going to be made to the Glashieburn Building to accommodate Middleton Park children – what changes will be made?

Page 21, Section 3.2a, Bullet 5 – Unfilled space projections

Your unfilled space projections do not accurately illustrate the available space within both schools as the capacity figures include nursery and the projection figures do not. This makes it look like there would be more unfilled places per school than there would be in reality.

Page 21, Section 3.2b, bullet 2 – Middleton Park exceeding roll by 2018?

According to Page 37 of your report Middleton Park will be over capacity by 10 pupils in 2018 however this is due to the Grandhome Estate. If you take this out of the equation Middleton Park will not exceed their roll.

Page 21, Section 3.2b, bullet 3 – Middleton Park roll projections

Can you provide roll projections for Middleton Park School (as shown on Page 37 of your report) which exclude the new Grandhome housing development?

Page 23, Section 4.1, paragraph 2 – Actions should committee approve proposal

Based on the suitability tables for Glashieburn produced in February 2013 Glashieburn was rated a C. Since then parents and children within Glashieburn school have identified no changes have been made to the school allowing it to be changed to a B. Can you provide a copy of the detailed overall rating matrix to illustrate which elements have contributed to the change from C to B.? Paragraph 2 states only minor enabling works are required however for a school with a C rating this would not be the case.

Page 23, Section 4.1, paragraph 3 – Detailed design of enabling works

Such drawings should have been provided with this report in order to make an informed decision.

The report states that the earliest the new school will open is August 2014. What will happen if there are delays based on your in statement in paragraph 1 stating it is best to avoid implementing the creation of a new school during the course of the school year?

Page 23, Section 4.1, paragraph 4 – Communication with parents

How will the implementation strategy be communicated to parents if the proposal is approved?

Page 23, Section 4.2, paragraph 5 – Staff

Does this sentence mean all staff will be transferred from Middleton Park to Burst Primary and existing Glashieburn staff will also stay on to teach in the new school – what does the word opportunity mean?

Page 27, Section 5.1.8 – Site plan and accommodation

This section (Glashieburn data) and 5.2.8 are not comparable. The data in 5.1.8 are not actual figures. The data in 5.2.8 for Middleton Park are actual figures. How can 24 areas be identified for Glashieburn as teaching spaces when this is not the current layout of the school and no configuration has been identified yet. See comment above for Page 23, Section 4.1, paragraph 3 – detailed design of enabling works.

Page 28, Section 5.1.9 – Site Map Glashieburn

This map is misleading. It is unclear from this map where Glashieburn's playground / playing field ends. Please provide another map clearly illustrating this.

Page 30, Section 5.1.11 – Total teaching entitlement

How has the figure 16.14 been derived? Does this include the base children?

Page 30, Section 5.1.15, paragraph 3 – Milestones

Who sets the milestones detailed in this paragraph, how are they tracked and therefore how meaningful are they?

Page 31, Section 5.1.16 – QI assessment

If schools evaluate themselves then how meaningful are the results? Surely the best approach would be for an independent body to evaluate and assess this.

Page 32, Section 5.1.17 – Glashieburn HMI Inspection Report

The link in the report for the last Glashieburn HMI Inspection report does not work.

When reviewing the Glashieburn HMI Inspection report and trying to compare it with the last Middleton Park HMI inspection report on the council website this could not be done as the format and findings were graded completely differently. This may be due to the fact that Glashieburn's last report was in 2009 and there has not been an HMI inspection at Middleton Park since 2003 for the school and 2006 for the nursery. If there is comparable data please provide.

Page 32, Section 5.1.18 – Other Achievements and Opportunities

How do the opportunities at Glashieburn compare with those already offered at Middleton Park?

Page 32, Section 5.1.19 – Attendance and Absence

Middleton parks absence rate is 3.2% whilst Glashieburn's is higher at 4%. In Burst Primary this will increase again due to lots of children being squeezed in and tightly packed together. Germs breed and multiply in this type of environment. Surely this cannot be of benefit to our children.

Page 32, Section 5.1.21 - Condition

Is this amalgamation viable based on the suitability of the Glashieburn building?

Please provide a copy of the evaluations and weightings for each element in the condition survey as I have been unable to source this data on the council website.

Page 33, Section 5.1.22 - Suitability

Please explain why Glashieburn's suitability has changed from C to B?

What changes have been made to Glashieburn that have allowed this change to happen?

Can you provide the overall rating matrix for Glashieburn showing the breakdown of all 25 elements that have resulted in Glashieburn's C classification changing to a B.? Please also provide a breakdown of the changes made for each element.

Page 35, Section 5.2.8, paragraph 4 – Site plan and accommodation

The accommodation breakdown for Middleton Park is not comparable with that of Glashieburn's. See earlier comment on Page 27, Section 5.1.8 – site plan and accommodation.

Page 36, Section 5.2.9 – Year group breakdown

There are 2 x primary 6 classes detailed in this report for Middleton Park and no primary 7 class. Please amend.

Page 37, Table 5 and Graph 3 – Actual and projected pupil numbers for Middleton Park School including Grandhome development

The table and the graph do not correspond with each other for 2018 onwards. The table shows a drop and the graph shows a rise – please amend.

Page 38, Graph 4 – Actual and projected pupil numbers for Middleton Park School excluding Grandhome development

Why have no tables been provided to support this graph? Please provide.

Does the capacity of Middleton Park School include the Porta Cabins?? Removal of the cabins would result in our school being closer to the roll if Grandhome development re-zoned.

Page 38, Section 5.2.10 – Deprivation

Where are the areas of deprivation within the Middleton Park school catchment area?

Page 39, Section 5.2.11, Building Use

Will the current Middleton Park lets be moved to Burst Primary or will this revenue be lost?

What let's do Glashieburn currently have?

What after school clubs / activities do Glashieburn currently have and what plans would there be for Burst Primary.

Page 39, Section 5.2.13, paragraph 1 – Curriculum

This paragraph does not make sense.

Page 39, Section 5.2.14, Educational Attainment

As per comments for page 30, Section 5.1.15, paragraph 3 – Milestones

Page 40, Section 5.2.15, Support for school improvement

As per comments for page 31, Section 5.1.16 – QI assessment.

How does the table in 5.2.15 compare with that of the Middleton Park school improvement plan?
The school improvement plan details figures for ratings and the table illustrates good / satisfactory.

Page 44, Section 6.1, Paragraph 5 – Long term strategy

The proposal for both our schools does not provide the basis for setting out a long term strategy for the school estate in Aberdeen as we will be squeezed into an old building (thus the name Burst Primary). This will not create the most beneficial and positive learning environment for our children and young people.

Page 45, Paragraph 2 – Current rolls / excess capacity

The Glashieburn roll detailed in this paragraph does not correspond with the roll detailed in Table 9, on page 46 and Table 10 on page 47 of your report.

The current roll data does not include nursery however nursery children, who the council said 100 would be accommodated at a recent public meeting, would bring the excess capacity down to 130 and this excess capacity is currently spread across 2 schools.

Glashieburn only has a capacity of 460 (new capacity as detailed in this report) therefore if you calculate the excess capacity based on one school there is none! Middleton Park = 168, Glashieburn = 261, Nursery = 100. $168 + 261 + 100 = 529$.

In the morning Burst Primary roll would be $529 - 40$ (Nursery pm pupils) = 489 (over capacity)

In the afternoon Burst Primary roll would be $529 - 60$ (Nursery am pupils) = 469 (over capacity)

This clearly illustrates that although there may be 130 unfilled spaces across both schools in 2013, the Glashieburn building is not capable of taking all children.

Page 45, 6.1.2, Table 7 – Housing completions

Where are the 30 houses coming from within Glashieburn zone in 2014/2015? How many children per household have been considered for Burst Primary?

Page 46, paragraph 1 – Ratio

Where has the ratio of 0.35 pupils per unit been derived from?

Page 46, Table 9, Page 47, Table 10 – Projected Rolls

When projecting roll figures how many children per household have been considered. For new builds the ratio may be different. Have the council considered the age of the houses in Bridge of Don and the fact that the next generation are now moving into the area.

Nursery children have not been considered within the body of this report when calculating combined projected roll for Burst primary. This is unfair as the combined projected figures are misleading. There will be 100 nursery children to accommodate on top of the combined figures detailed in Table 10. 60 in the morning and 40 in the afternoon. This will push the combined figure over the new capacity (460) of the amalgamated school.

Page 47, final paragraph - Alterations

Minor alterations cannot accommodate this volume of extra children. What minor alterations can accommodate 181 P1 to P7 children and 40 nursery children as per your predicted rolls for Middleton Park table 10, page 47.

Minor alteration details should have formed part of the body of this report in order to allow informed decision regarding the amalgamation.

Page 48, Paragraph 2 - Reconfiguration

Minor reconfiguration is not sufficient to accommodate an extra 181 Primary 1 to Primary 7 children (taken from Table 10 of your report) and 40 nursery children (not considered in your report). Based on plans presented at a recent public meeting it is clear that this would remove key areas of space currently provided in Glashieburn school such as library, wet areas, computer rooms etc reducing flexible learning opportunities and creating an environment whereby it will be extremely difficult to learn due to lack of space (noise, heat, disruption).

Page 48, paragraph 5 - Space

Please define ample space? Is there a basic standard the council must adhere to?

Page 49, Table 11 – Financial savings

Cost seems to be the only logical reason for this proposal and driver for the change. This is entirely unacceptable. Can you explain if cost is not the key driver then what is?

Page 49, Table 12 – Condition and Suitability Evaluations

As per earlier comments.

Page 50, Suitability, Paragraph 4

Glashieburn's suitability rating has changed from a C to a B however will an amalgamated school be capable of delivering a B classification?

Page 50, Section 6.4 – Educational considerations

How will staff levels and lack of teaching space at Burst Primary affect attainment levels? What plans are in place to ensure attainment levels remain the same / improve?

Page 51, Section 6.5.2, paragraph 4 – Feedback from informal engagement

A new building in the correct location would be well received by the community however squeezing our children into Burst Primary is not a viable or acceptable option. The council did not listen to the views of the people during the informal engagement as if they had we would be in a completely different position.

Page 51, Section 6.6, paragraph 5 – School travelling routes

Living in the Buckie's any potential health benefits I may have had from walking to school with my children will now be removed due to the need to take the car. This is too far for my nursery child to walk and would take too long. Children have limits and my youngest child's limit is as I approach the Middleton Park boundary. I will now need to take the car every day therefore this statement is entirely incorrect.

Page 52, Section 6.7, paragraph 1 – Equality of provision

Your report states that by educating all children in the same school, there is greater opportunity for equality of provision. There will be no equality across the ASG or the city as Burst Primary will have the worst conditions and as a result this will have a negative impact on our children's education.

Page 52, Section 6.7, paragraph 2 – Safe travel

Arrangements for safe travel to school should have been embedded within your report in order to allow an informed decision regarding amalgamation.

Page 54, Section 7.1, paragraph 2 – Improved educational experience

Due to lack of space Burst Primary cannot deliver on this statement. The facility would not be appropriate, nor would it be capable of delivering a high quality, wide and relevant curriculum.

Page 54, Section 7.1, paragraph 3 – Enhanced curriculum

Is the statement within this paragraph demonstrable / verifiable – please provide evidence that curriculum is enhanced within larger schools of this standard and at bursting point.

Page 54, Section 7.1, paragraph 5 – Enhanced opportunities

Please provide details of what additional enhanced opportunities there will be for gifted / talented pupils in Burst Primary compared to those already offered at both schools.

Page 54, Section 7.1, paragraph 6 – Highest quality learning experience

Please explain how the commitments made within this paragraph will be delivered in a school that is bursting at the seams.

Page 54, Section 7.1, paragraph 7 – Ethos

The Ethos at Middleton Park primary is currently excellent. Please explain how you can improve upon this in an amalgamated school.

Page 55, Section 7.2, paragraph 4 – additional benefits

How many staff will there be at Burst Primary, how will they be divided up and will all needs be met (including special needs / base children).

Page 56, paragraph 2 – Flexible areas

Please describe where flexible areas for investigative work and active learning will be in Burst Primary.

Page 56, paragraph 4 – Enhanced facilities

This statement cannot be correct. Please describe the enhanced facilities that will result in a higher quality learning experience at Burst Primary.

Page 56, paragraph 5 – Flexible / non standard spaces

Please describe what is meant by flexible and non-standard spaces of different dimensions and configuration. Does this essentially mean squeezed in and using corridors as classrooms?

Page 56, Section 7.4, paragraph 2 – Curriculum for excellence

Please provide rationale and provide details to support the statement made in this paragraph stating that children within an amalgamated school will have better opportunities to experience the curriculum than if the schools remain separate.

Page 57 – Curriculum for excellence

The statements regarding delivering greater opportunities to deliver curriculum for excellence on this page are not justified and can be achieved whether or not they are in the same building. This kind of sharing of information etc is currently achieved perfectly well within the Oldmachar ASG and due to current technology and regular meetings this is easily possible.

Page 58, Paragraph 4 – Increased range of educational experiences

Your report states that the learning and teaching as well as play resources at Middleton Park will be added to those at Glashieburn, again increasing the range of educational experiences which staff can use to engage with pupils however will there be space for this in Burst Primary?

Page 58, Paragraph 8 – Attendance

The statement made in this paragraph is unproven and guess work.

Page 60, Section 7.7, paragraph 5 – Staff

What will happen to those in other senior leadership positions i.e. deputy heads?

Page 62, Section 7.10, paragraph 3 – Extra Curricular Opportunities

In an amalgamated school there may be greater pupil numbers to form the groups but you need staff or in the example of football teams (parents) to head up the groups and this is often the stumbling block.

What do Glashieburn have that Middleton Park don't?

Page 63, Section 7.11, paragraph 3 - Staff

Is this an automatic transfer or will the staff be required to apply for positions?

Page 63, Section 7.12, paragraph 1 – Learning Environment

Will the learning environment at Glashieburn still be as flexible when Burst Primary is formed?

Page 63, section 7.12, paragraph 3 – reconfiguration of Glashieburn School

Reconfiguration plans should have been embedded in this document in order to make an informed decision regarding the proposed amalgamation. What does minor reconfiguration mean?

Page 64, Section 7.13, paragraph 3 – Middleton Park capacity

Middleton Park will only exceed capacity in 2018 if Grandhome development is not re-zoned.

Page 64, Section 7.13, paragraph 4 – additional accommodation option Middleton Park

If re-zoning of Grandhome estate does not proceed then why can't the pupils from that estate be accommodated in Forehill primary school as it has spare capacity and it would be a much safer route for the children travelling to school.

Page 64, Section 7.13, paragraph 5 – re-zoning Grandhome to Danestone

This is an entirely unacceptable solution to expect primary age children to cross a main trunk road to get to school every day. Zoning part of Middleton Park has been considered for Danestone in the past however it was considered too unsafe. What has changed?

Further crossings will cause increased congestion to an already problematic road.

Page 64, Section 7.13, paragraph 7 – Middleton park ability to accommodate pupils

Please clarify what significant issues relate to Middleton parks ability to contribute to accommodating pupils in a manner that meets the local authority's statutory duty.

Page 68, Section 8, paragraph 1 – Increased capacity glashieburn

How can Glashieburn primary accommodate 460 children?

Please provide details of alterations required to accommodate this increase from the current capacity of 420 to the increased capacity of 460.

Page 68, Section 8.1, bullet 1 – increased flexible learning space

How can this commitment be fulfilled for Burst Primary in a school with a severe lack of space.

Page 68, Section 8.1, bullet 2 – Base

The reason Middleton Park does not have a base is because the base for the ASG is in Glashieburn. The base space will need to be reduced due to lack of space in Burst Primary therefore this is not a selling point and extremely upsetting and damaging for the children involved. Their needs have not been considered in this report.

Page 68, Section 8.1 – Accommodation and facilities

Can you provide details on how you will provide provision for all other elements identified in section 8.1 including storage facilities, assembly, internal and external physical education, offices, library, dining and external areas including playgrounds and car parking?

Can the hall for assembly accommodate all children together?

How many children can the internal and external space accommodate for physical education and how many hours of physical education per week will the children benefit from at Burst primary?

How does this vary to that already offered at the 2 schools individually?

Where will the library go and will it be large enough to accommodate the increase in children and their needs?

Both halls are currently being used for lunch in Glashieburn – how would you propose to deal with the increased number of children in Burst Primary?

Would all children be allowed access to the playground together during break and lunch and how many children can the space accommodate?

Children will suffer as a result of reduced external space to play from what they currently have at both schools.

Car parking at Glashieburn is a major issue and congestion is likely to occur due to increased numbers of parents taking their car.

How do you propose to deal with this?

Page 71, Appendix 1, Section 1.2 Middleton Park School catchment

Why has 2010 / 2011 and not more current data been used in this section.

Page 72, Appendix 1, Section 1.3. Glashieburn School catchment

As above why has 2010 / 2011 dataset been used when you have access to more recent data?

Page 73, Table 2.2

Age and weather would factor into the time difference between Middleton Park and Glashieburn walking commute times.

Have the council considered whether there are appropriate routes and school access for those with pushchairs / disabilities.

Page 75, Section 3, Bullet 1 – School rolls

The calculations here are incorrect.

Glashieburn Primary school has 321 pupils not 242 as stated in your summary.

Middleton Park school has 208 pupils not 206 as stated in your summary.

Page 75, Section 3, Bullet 2 – out of zone children

Will those out of zone children attending both schools still be able to attend Burst Primary? Burst Primary will be at bursting point therefore the likelihood of siblings for out of zone children getting into the school are slim. How do you propose to deal with this?

Page 75, Section 3, Bullet 8 – walking times

How was the extra 7 minutes calculated?

My son is tired upon arrival at Middleton Park therefore the extra 7 minutes would push him over the edge leaving me with no choice but to take the car should the amalgamation occur.

The council's strategy of having bigger schools with wider catchment areas contradicts their strategy to encourage walking to school as the increased distance takes this choice away.

Page 75, Section 3, Final paragraph– increased traffic

A risk assessment due to increased traffic accessing Glashieburn School should have been undertaken before proposals were published and detailed in this report. Having read this document I worry that this would be more of a concern if the schools amalgamate into Burst Primary.

I would appreciate it if you could reply to me by addressing each point separately ensuring a full and thorough response to all questions, issues and comments raised.

I look forward to hearing from you in due course.

Middleton Park Primary Parent

1st September 2013

Mr Gayle Gorman, Director of Education, Culture & Sport

Glashieburn and Middleton Park Consultation
Aberdeen City Council
Business Hub 13
Second Floor North
Marischal College
Broad Street
Aberdeen
AB10 1AB

Dear Gayle Gorman,

Proposed Middleton Park Primary School Closure & Merger with Glashieburn Primary

I wish to protest at the news that Middleton Park has been threatened with closure and being merged with Glashieburn Primary School. This proposed action raises a number of concerns that I feel have not been fully addressed.



1. Attainment level

The attainment level of Middleton Park is the highest of the three primary schools on Jesmond Drive. Table 1 shows how Middleton Park Primary compares with the rest of Aberdeen City. This will be affected by the proposed merger of Middleton Park to Glashieburn Primary. It is also better than the city average, strange that the stated goal is to increase the attainment level of Aberdeen to that being achieved by Edinburgh and Glasgow by closing one of its higher attaining schools

Percentage of pupils attaining or exceeding minimum levels for their stage (P3 to P7) 2010/2011		
	Middleton Park	City
Reading	88	80
Writing	96	73
Maths	94	82

Table 1

2. School site safety

The position of Middleton Park Primary compared to Glashieburn Primary is actually better suited as Asda Car Park is nearby which allows parents to safely drop off and pick up their children. The situation at Glashieburn is more dangerous as there is no suitable parking on Jesmond Drive. With around 200 extra pupils going to Glashieburn Primary, Jesmond Drive will become gridlocked in the morning. I use Jesmond Drive

3. School building suitability

There is little to separate the schools on Jesmond Drive regarding this. All that I have been told is that Glashieburn is large enough to accommodate Middleton Park school as is, no additional building work is required. This means rooms that are currently being used as computer room and library and for extra-curricular activities will be earmarked for closure and put aside for the use of Middleton Park. This will have an effect on attainment levels of both the affected schools of Middleton Park and Glashieburn.

4. School building capacity

Currently the capacity figures are quoted at 60 to 70%. (Although I dispute the 71% figure quoted for Middleton Park as this figure includes the temporary classes housed in portacabins.) With the proposed future housing developments there will be very little spare capacity left for the children from these new developments as the combined Middleton Park/Glashieburn School will be at 100% capacity. In the short term the schools are under capacity but in the medium to longer term with the increasing birth rate and future housing developments will acquire this spare capacity. I wonder if the main reason to close and amalgamate these schools is just a ploy to get the remaining amalgamated school to full capacity forcing any future developers to pay for the creation of a new school. Meanwhile in the interim period the amalgamated school which council officers branded "poor" condition in January 2013 will result in a

period where education standards are bound to drop as no new major alterations are due to take place. Only new uniform and new staff are provisioned for.

5. School timetable

With the amalgamated school running at full capacity and rooms currently used for computer study, library functions being converted to class rooms the time tabling of playground time and lunch time will be complex. It will require 3 different sessions to accommodate this number of pupils at the school canteen for example, a logistical nightmare.

6. Nursery provision

There is no mention of a nursery at the amalgamated school in the consultation document. Does this mean there will be no provision made for nursery places? Where will the 3 to 4 year olds then go for nursery?

I urge you to re-consider your position and fight to stop the closure and merger of Middleton Park with Glasnebum.

Yours sincerely

Concerned parent

EDUCATION, CULTURE
AND SPORT

05 SEP 2013

RECEIVED

3rd September 2013

Dear Sirs,

Closure of Middleton Park / Glaswegian Schools
I cannot comprehend how you can close schools without a great deal of consultation on the pros and cons.

We have been in this situation before and the results must be recorded somewhere that this should not happen.

To build a new school. I thought money was tight. What will happen to the teachers in the meantime at Middleton Park.?

Have you ever been in Bridge of Don at rush hour? Traffic is bad enough without this added snarl up which you will be causing.

I thought in this day of health and safety this would have been paramount to any situation involving very young children. Education and safety of all children should be discussed with every parent involved in this issue.

Can you really, with hand on heart, think that this is for the betterment of Bridge of Don. I for one, think not.

You have already closed Balgownie School which served the children in that area plus Grandholm that has no bus service. Yet your thinking caps on and remember that it is childrens welfare that is the most important

As you will note, I have written to you, not an email which unfortunately is going out of date.

Yours faithfully,

By .. PS
Glasnieburn.

Upset and against the
Middleton & Glasnieburn
Primary Schools

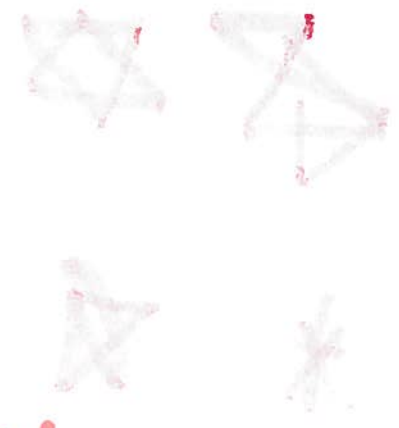
Save
OWN please
School!

Glashie burn
Middletonpark

Please
Help
us!

Save

please



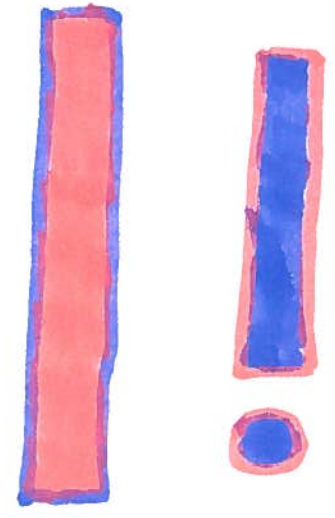
our

please

School

please

please



Glashieburn
Middletonpark

please
Help
us!

Save

our

School!

Glashiburn
Middleton park

Help
us!

Save
Our
School!!!

Glashieburn
Middletonpark

Help
us!

EDUCATION, CULTURE
AND SPORT

05 SEP 2013

RECEIVED

1st September 2013

Mr Gayle Gorman, Director of Education, Culture & Sport

Glashieburn and Middleton Park Consultation
Aberdeen City Council
Business Hub 13
Second Floor North
Marischal College
Broad Street
Aberdeen
AB10 1AB

Dear Gayle Gorman,

Proposed Middleton Park Primary School Closure & Merger with Glashieburn Primary

I wish to protest at the news that Middleton Park has been threatened with closure and being merged with Glashieburn Primary School. This proposed action raises a number of concerns that I feel have not been fully addressed.

1. Attainment level

The attainment level of Middleton Park is the highest of the three primary schools on Jesmond Drive. Table 1 shows how Middleton Park Primary compares with the rest of Aberdeen City. This will be affected by the proposed merger of Middleton Park to Glashieburn Primary. It is also better than the city average, strange that the stated goal is to increase the attainment level of Aberdeen to that being achieved by Edinburgh and Glasgow by closing one of its higher attaining schools

Percentage of pupils attaining or exceeding minimum levels for their stage (P3 to P7) 2010/ 2011		
	Middleton Park	City
Reading	88	80
Writing	96	73
Maths	94	82

Table 1

2. School site safety

The position of Middleton Park Primary compared to Glashieburn Primary is actually better suited as Asda Car Park is nearby which allows parents to safely drop off and pick up their children. The situation at Glashieburn is more dangerous as there is no suitable parking on Jesmond Drive. With around 200 extra pupils going to Glashieburn Primary, Jesmond Drive will become gridlocked in the morning. I use Jesmond Drive

3. School building suitability

There is little to separate the schools on Jesmond Drive regarding this. All that I have been told is that Glashieburn is large enough to accommodate Middleton Park school as is, no additional building work is required. This means rooms that are currently being used as computer room and library and for extra-curricular activities will be earmarked for closure and put aside for the use of Middleton Park. This will have an effect on attainment levels of both the affected schools of Middleton Park and Glashieburn.

4. School building capacity

Currently the capacity figures are quoted at 60 to 70%. (Although I dispute the 71% figure quoted for Middleton Park as this figure includes the temporary classes housed in portacabins.) With the proposed future housing developments there will be very little spare capacity left for the children from these new developments as the combined Middleton Park/Glashieburn School will be at 100% capacity. In the short term the schools are under capacity but in the medium to longer term with the increasing birth rate and future housing developments will acquire this spare capacity. I wonder if the main reason to close and amalgamate these schools is just a ploy to get the remaining amalgamated school to full capacity forcing any future developers to pay for the creation of a new school. Meanwhile in the interim period the amalgamated school which council officers branded "poor" condition in January 2013 will result in a

period where education standards are bound to drop as no new major alterations are due to take place. Only new uniform and new staff are provisioned for.

5. School timetable

With the amalgamated school running at full capacity and rooms currently used for computer study, library functions being converted to class rooms the time tabling of playground time and lunch time will be complex. It will require 3 different sessions to accommodate this number of pupils at the school canteen for example, a logistical nightmare.

6. Nursery provision

There is no mention of a nursery at the amalgamated school in the consultation document. Does this mean there will be no provision made for nursery places? Where will the 3 to 4 year olds then go for nursery?

I urge you to re-consider your position and fight to stop the closure and merger of Middleton Park with Glashieburn.

Yours sincerely

Concerned parent

Glashieburn & Middleton Park Consultation
Education, Culture and Sport
Aberdeen City Council
Business Hub 13, Second Floor North
Marischal College
Broad Street
Aberdeen AB10 1AB
schoolestate@aberdeencity.gov.uk

6 October 2013

Dear Sir/Madam:

I am writing in relation to the proposed closure of Middleton Park and Glashieburn Schools, and the subsequent formation of a new amalgamated primary school within the existing Glashieburn building. I am a parent of two current Glashieburn pupils and one former pupil who is now at Old Machar Academy.

I would like to state in no uncertain terms that I am **strongly against** this proposal and I seriously question many, if not all, of the arguments supporting it as outlined in the Public Consultation Document.

I am concerned by multiple aspects of the proposal. Having attended two of the public consultation sessions and read the Public Consultation Document with its many errors, typos, inaccuracies and obvious “cut and paste” sections from the Torry-Kincorth document, my primary concerns are the following:

- 1) The drastic reduction in internal space per pupil resulting from the **cramming** of the expected 430 pupils (2013 rolls for both schools combined) into the new school.

This building was suitable for its official capacity of 420 when it was built over 30 years ago. However, it cannot support a pupil roll of 420 (or 430) under Curriculum for Excellence and the teaching and learning environment which is required for CfE. Modifications to the physical space as outlined in the proposal document are “sticking plaster” solutions “on the cheap” and will not address the absolute lack of internal space for 430 pupils or the even higher number of 460 pupils as proposed by Council officials in public hearings. Covering of courtyards and removing internal walls will not provide the pupils with the space they need. These numbers do not even include the sizeable nursery provision. The only solution to this is to build an entirely new school, along the lines of the excellent Braehead School (which incidentally has 3 times the internal space per pupil of the proposed merged school!).

- 2) The lack of outdoor playground space within the Glashieburn boundaries for the anticipated 430 pupils.

It is my understanding that the current playground / outdoor areas for Glashieburn School already fall far short of the Government statutory requirements for outdoor space. Indeed, my own children comment regularly on the fact that the playground is crowded. When the weather conditions result in the grass being “out of bounds” to the pupils (because it is muddy / slippery), all of the children are expected to remain on the tarmac area. The current school roll finds this difficult to achieve; imagine adding another 200 pupils to this crowded area! The Consultation Document gives a very false representation of the outdoor space at Glashieburn (p28) by not clearly showing the fenced boundary of the outdoor space, thereby giving an impression that there is more space available. The fact that Glashieburn is entirely surrounded by housing and the roughly treed area of the “Glashie Burn” means that there is no possibility for expanding the outdoor space to accommodate 420, 430 or 460 pupils! The closest playing fields that children could use for sports and team games would be those at Old Machar Academy, approximately ½ mile away. This would seem to undermine society’s current focus on encouraging physical activity amongst young people.

- 3) The negative impact on the learning and working environment of the children within the proposed school as a result of inadequate facilities because of the significantly larger pupil roll.

Council officials have proposed covering courtyards and removing internal walls as a way of conjuring up more space for the added 200 pupils. Removal of the courtyards would take away the only natural light to some areas and would eliminate a valuable teaching resource used by the ASN Base and in science teaching across the school. Glashieburn is already an open-concept school; removing even some of the few existing internal walls would make the space unworkable, noisier and more distracting for pupils. Curriculum for Excellence expects that pupils be engaged in diverse and active learning activities, not solely sitting silently at tables listening to teachers talk. Having volunteered in Glashieburn as a parent helper and library assistant, I am very concerned about the renovations proposed in this plan. The school library does not appear to survive the re-design; neither does the ICT suite. The cloakrooms are already crowded and difficult for pupils to navigate every day, more so during inclement weather. The plan to bring 200 extra pupils includes no improved or additional toilet facilities, in a school where anecdotal evidence states that some pupils currently prefer to wait until they go home to toilet! Currently, pupils at Glashieburn must queue for hot dinners and the packed lunch hall is likewise very busy. Adding 200 pupils to this environment will require even more staggered lunches, with the increased likelihood of pupils not getting their dinner choices and a reduction in the amount of time spent outside at lunch getting fresh air and exercise. The 2 gym halls at Glashieburn are currently used extensively for a variety of activities: PE classes (2 hours per week for each pupil as required by government), whole school assemblies, as well as drama and music performances. Once again, trying to accommodate a further 200 pupils into these spaces would be difficult, if not impossible in the case of a whole school assembly.

- 4) The apparent oversight of Aberdeen City Council to conduct a risk assessment of the proposed merger in advance of the consultation, to determine whether the proposal is even a viable option from a Health & Safety point of view.

I am significantly concerned that a risk assessment of the proposed merger has not yet been undertaken by Aberdeen City Council, and that the proposal has gone to Consultation without this. The proposal to add 200 extra pupils into a 30+ year old building will require extensive renovations and “re-jigging” of basic school activities such as PE class, lunches, and assemblies. A risk assessment of the impact of all of these changes is a must. I am particularly concerned about fire safety within the new merged school with 430+ pupils, especially as my children have been evacuated several times because of fires in the building.

- 5) The increased safety concerns for the entire neighbourhood around Glashieburn with more children trying to get to the site, either on foot or being driven to school, and no obvious ways to mitigate against these concerns within the current physical site.

The proposed document does not make any mention of how the City will ensure that the streets around Glashieburn can cope with the extra pupils attending the merged school. Currently, a significant proportion of pupils walk to Glashieburn. As a parent, I am comfortable with this and feel the journey to school is as safe as one could expect. However, the enlarged catchment area for the new school will necessarily mean more parents driving their children to school, especially those living in the farthest corners of the catchment with smaller children. There are no suitable roads around the school for drop-off parking and the main road, Jesmond Drive, is very busy. More cars circling the streets looking for a place to stop and drop-off children will mean traffic problems and increased safety concerns for the children who continue to walk to school.

- 6) The Consultation Document **does not** convince me in any way that the proposed merger meets the Government requirement that there **must be an educational benefit for the children involved**. Indeed, the proposed merger will, in my opinion, seriously undermine the abilities of the teaching staff to support the children in their learning.

All these points outlined above show that the claim that this proposed merger will bring educational benefits to the children is simply absurd. As such, **this proposal should not be pursued any further**.

The obvious options in place of this proposal – re-drawing the catchment boundaries for Bridge of Don or building a new school – should be seriously considered instead.

Sincerely,

To whom it may concern,

Please find attached a list of all the alterations that should have been made prior to the public release in the consultation document regarding the proposed closure of Middleton Park and Glashieburn Schools to establish an amalgamated school within the existing Glashieburn building and campus. I would like to say that I was baffled at the quality of the whole document which I believe is supposed to have been written by professionals dealing with education ! One would think it would have been proof-read ! Unfortunately it doesn't seem to be the case as the document is full of grammatical mistakes, omitted words, sentences which don't make sense, non-consistent figures, misleading graphs, etc., etc...!

Please note the following statements have been taken from the public consultation document sent to both parent councils on Monday 26th August, which was supposed to be **the final version** !!!!

Page 15 :

2.6 Financial Considerations

The main driver for this proposal is not financial. It provides a solution to a changing situation which results in the provision of suitable and efficient accommodation for pupils across the whole the area.

Comment [KS1]: This should read across the whole of the area.

Page 18 :

3.1.1 Detailed proposals

the existing Middleton Park and Brimmond Schools' catchment areas will be varied to create the first phase of a new zone within the proposed development at Grandhome Estate. This element will be fully implemented when the first school within the Grandhome development is delivered. This is dependent upon the delivery of the development but is likely to be August, 2016.

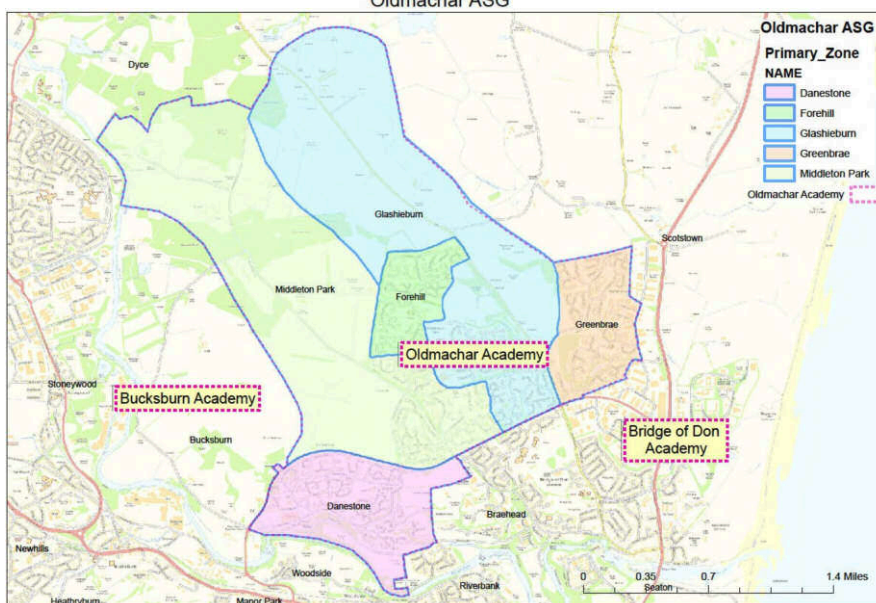
Comment [KS2]: Will Grandhome primary children will go to Danestone or Brimmond ?? This statement is contradictory to what is stated elsewhere in the report

pupils from the early phases of the development at Grandhome estate will be accommodated at Danestone Primary School, until the first new school is delivered in the development.

Comment [KS3]: This contradicts what has just been sated above !

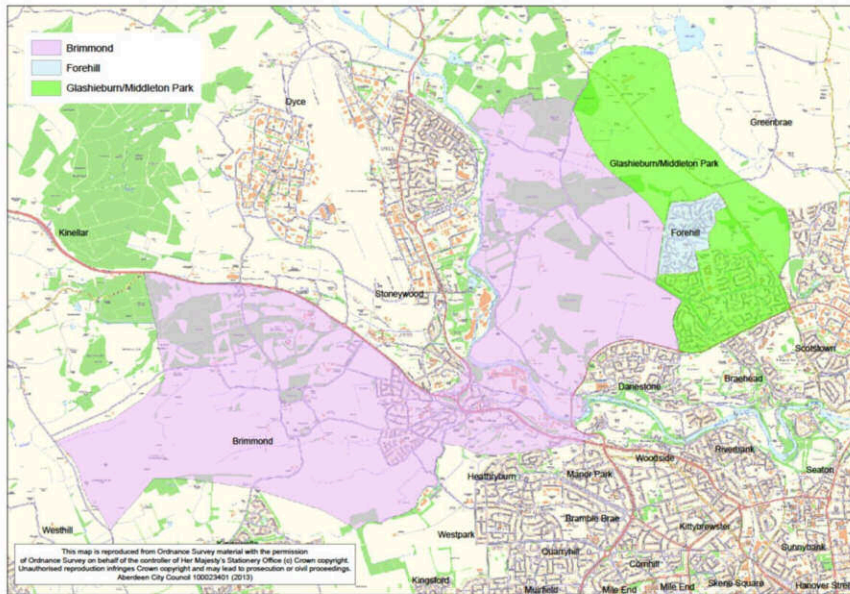
Page19 :

Map 1: Existing catchment areas – Oldmachar ASG showing Glashieburn School and Middleton Park School zones.



Comment [KS4]: Extremely difficult to determine catchment changes due to different scale for both maps – clarity / further maps of same scale required

Map 2: Proposed new catchment area: Amalgamation of existing Glashieburn School and Middleton Park School zones and re-zoning of Grandhome to Bucksburn.



Comment [KS5]: Again on one hand proposal says Grandhome children will be re-zoned for Danestone and in this map says they will be re-zoned for Bucksburn- No scale input on this map

Page 21 :

i [The Grandhome development is removed (pupils will be zoned to one of the new schools), is relatively small and decreasing. It would be the second lowest of all non-denominational schools by 2015.]

Comment [KS6]: This paragraph does not make sense

Page 27 :

5.1.8 Site plan and Accommodation

[2 gyms, one of which is also used for dining]

Comment [KS7]: Both halls are currently used for dining in Glashieburn.

Page 36 :

5.2.9 Pupil Population

There were 168 pupils, distributed by year group as

- P1 – 24
- P2 – 33
- P3 – 30
- P4 – 15
- P5 – 23
- P6 – 21
- P6 – 22

Comment [KS8]: Correction : there are one p6 class and one p7 class currently in Middleton Park !!!

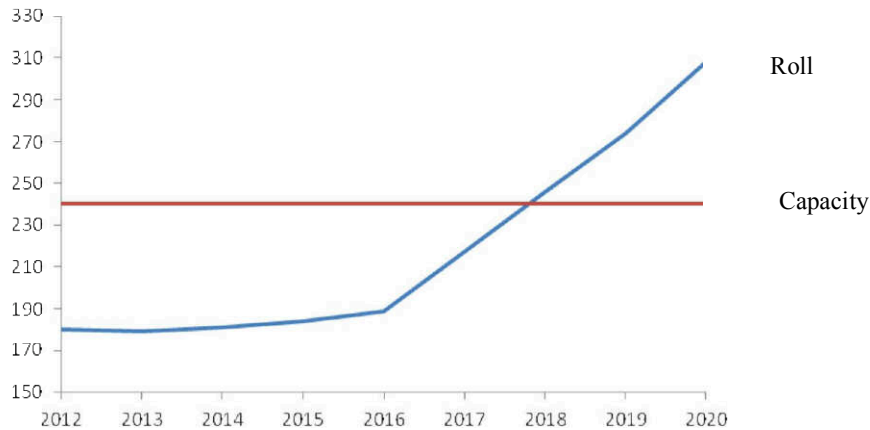
Page 37 :

Table 5: Actual (March 2013) and Projected Pupil Numbers (2013-2020): Middleton Park School, 2012-based census projections

Actual	Projected Pupil Numbers							
March 2013	2013	2014	2015	2016	2017	2018	2019	2020
180	179	181	184	180	183	178	171	169

Comment [KS9]: This does not correspond with the graph below which shows an increase in the roll not a decrease as per this table

Graph 3: Actual (March 2013) and projected pupil numbers (2013- 2020): Middleton Park School



As can be seen from the Graph 3, the capacity of Middleton Park will be exceeded by school session 2018-19. This is due to significant housing developments in the existing Middleton Park School catchment area, in particular the proposed development at Grandhome estate.

Page 39 :

5.2.13 Curriculum

In common with all other schools in Aberdeen, Middleton Park School is currently its approaches to implementing the 3-18 curriculum, ‘A Curriculum for Excellence.’

Comment [KS10]: This paragraph does not make sense !

Page 41 :
5.2.20 Condition

A condition survey of Middleton Park School was undertaken during July, 2013 to assess the condition of the building fabric and the associated services.

Comment [KS11]: Comma is not needed

Page 42 :
5.2.21 Suitability

A moderated suitability survey of Middleton Park School was undertaken during August, 2013 to assess the suitability of the building and the associated areas for the delivery of Curriculum for Excellence.

Comment [KS12]: Comma is not needed

Page 45 :

The current rolls of the two schools are

Glashieburn School	261
Middleton Park School	168
Total	429 (at August, 2013)

Comment [KS13]: Comma not needed

There is significant excess capacity at both schools, a total of 230 pupil places being unfilled at August 2013

Comment [KS14]: It should be 231 pupil places !!!

Page 47 :

Table 10: Glashieburn, Middleton Park and Combined Rolls with additional pupils from Grandhome zoned to Danestone, 2012-based census figures

Comment [KS15]: The title should state that the figures used are projected figures !

This can be achieved by implementing a number of alternative options will be identified and these shared with parents/carers and staff if the proposal progresses.

Comment [KS16]: This sentence doesn't make sense !

Page 48 :

The school will be able to accommodate the number of estimated under this proposal and provide more than ample spaces for general purpose use.

Comment [KS17]: This sentence doesn't make sense !

Page 55 :

In terms of these core Quality Indicators, both schools have identified scope for improvement in all areas. This proposal can provide a catalyst for the schools continuing their journey from good to great in terms their performance and that of their pupils.

Comment [KS18]: This doesn't make sense, 'of' has been omitted !

Page 68 :

8. The amalgamated school

There are various approaches to e-configuring the accommodation at Glashieburn to make more efficient and effective use of the available space.

Comment [KS19]: This doesn't make sense !

Page 71 :

1.2 Middleton Park School

For the 2010-2011 session at Middleton Park School there were 166 pupils with an additional 40 nursery pupils,

Comment [KS20]: Why are 2010-2011 figures used when Aberdeen City Council has actual numbers up to 2013 ? When was this report written ?

Page 72 :

1.3 Glashieburn Primary school

According to September 2011 figures there were 242 pupils in attendance at Glashieburn Primary School

Comment [KS21]: Same as above, why are 2010-2011 figures used when Aberdeen City Council has actual numbers up to 2013 ? When was this report written ?

2.2 Walk distances

For this, we have worked on the basis that the average walking pace with children is 25 minutes per mile.

Comment [KS22]: Taking into account this figure, the data in table 2.2 doesn't add up !!!!

Table 2.1- Example travel distances for pupils travelling from Middleton Park Catchment to both schools

	Street	Walk distance to Middleton Park	Walk distance to Glashieburn	Difference
A	Valentine Drive and Jesmond Avenue	0.8 miles	1.1 miles	+0.3 miles
B	Middleton Crescent and Middleton Circle	0.5 miles	1.0 miles	+0.5 miles
C	Slains Lane	0.4 miles	0.5 miles	+0.1 miles
D	Foveran Street	0.3 miles	0.4 miles	+0.1 miles
E	Middleton Road and Jesmond Drive	0.3 miles	0.7 miles	+0.4 miles
F	Whitestripes Path	0.2 miles	0.7 miles	+0.5 miles

Table 2.2- Example average walking times for pupils travelling from Middleton Park Catchment to both schools

	Street	Average walking time to Middleton Park	Average walking time to Glashieburn	Difference
A	Valentine Drive and Jesmond Avenue	15 minutes	22 minutes	+7 minutes
B	Middleton Crescent and Middleton Circle	10 minutes	17 minutes	+7 minutes
C	Slains Lane	8 minutes	9 minutes	+1 minute
D	Foveran Street	6 minutes	7 minutes	+1 minute
E	Middleton Road and Jesmond Drive	5 minutes	13 minutes	+8 minutes
F	Whitestripes Path	4 minutes	12 minutes	+8 minutes

Comment [KS23]: Both average walking time for pupils to Middleton Park and to Glashieburn Schools in the following table do not add up with the average walking pace with children of 25 minutes per mile stated above in section 2.2 !

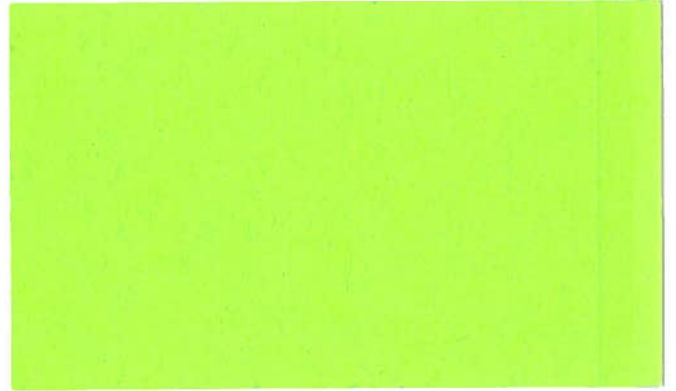
Page 75 :

3. Summar

1. Glashieburn Primary School has 242 pupils and Middleton Park School has 206 pupils, including nursery pupils.

Comment [KS24]: , why are 2010-2011 figures used when Aberdeen City Council has actual numbers up to 2013 ? When was this report written ?

Proposed



To whom it may concern,

I am writing to voice my exasperation towards the proposed closing of Glashieburn and Middleton Park and creation of a new School in the same building as Glashieburn.

I was one of the first primary 1's of Glashieburn back in the 70's. The new estate of Collieston had just been constructed and Newburgh estate was about 1/3 of the way through. We were moved from pillar to post awaiting the construction of the school. When completed there was over 500 children at Glashieburn. At that time there was no fence and the majority were able to head home for lunch, I also remember the stampede to get our milk (highlight of the day). Thankfully education has changed since the 70's, we sat in front of Blackboards in nice regular lines, education was repeat and copy. One of my earliest memories was the teacher and the class playing "Chinese Whispers" and not once the phrase getting beyond the first row due to the noise from the open plan and the other classes, I'm sure my teacher, at the time, was making a point, we all thought we were just deaf.

1. Is it really a new school? We've been told time and again that this will result in a new school. Yet anyone can see that Middleton Park is being closed and the pupils moved to Glashieburn and then Glashieburn is being renamed "whatever" and with a lick of paint and a new sign it becomes a new school. I'm sure this will mean new Uniforms for all the children, new teachers and new administration – Apart from forcing the teachers to reapply for positions there is no logical reason for this. It just seems a cost that is totally unproductive and parents will have to cough up more money.
2. Two of the highest achieving Schools in the city into one. Both schools are high achievement it would be very difficult to move from their current rating to a higher rating. Yet the council must show "Education benefit", which is going to be very difficult based upon the following points.
3. Capacity of the building. At present the school roll of Glashieburn is 255, with a capacity of 420. This means its running at 61%. While Middleton Park roll is 180 with a capacity of 240 a 75% Capacity¹. Move the current amount of kids from Middleton Park to Glashieburn gives a total number of 435 kids, over the current 420 capacity by 15, but that is not a problem, according to this, as the capacity of Glashieburn is to increase next year from the current 420 magically to 460. Taking the expected capacity from 104% to 95%. So we have the capacity increasing by 40 (finding a minimum of 2 extra classrooms) but still sitting at 95% capacity. Even if we accept the building can miraculously increase in capacity (which I don't) means a tiny increase in numbers will put the new school over capacity? How can anyone take this chance? Creating one mega school catchment area in such a growth area of Aberdeen means there is near certainty that this capacity will be breached in the very near

¹ <http://www.aberdeencity.gov.uk/nmsruntime/saveasdialog.asp?IID=53376&SID=23865>

future. Is it an education benefit for our children to be constantly under threat of moving schools?

4. Internal Floor Area. Glashieburn has a Gross Internal Floor Area of 2892M² with a Capacity of 460 gives a m² per pupil of 6.3m², this is an increase on Middleton Parks GIFA per public from 5.6m² but, of course, a decrease from 6.9m² for Glashieburn (due to the capacity magically increasing). However if you look at school roll, Middleton Park presently has 7.5M² per pupil and Glashieburn 11.3M² the new school will have only 6.6M². This is the smallest GIFA in Aberdeen. Squeezing our children in cannot be an education benefit?
5. Capacity and Internal Floor Area equivalents. If we compare the size of school (internal) with other schools in Aberdeen with similar we see some striking problems. Kingswells Primary has a similar school roll (450) but has 3242M², that's 350M² more room for a capacity 10 less than Glashieburn, or Woodside School has a school roll capacity of 420 with 3728M², 836M² larger. Are we really saying that there will be no education detriment putting so many kids in one area? Or are we to tell these other schools to expect 100 extra pupils?
6. Teachers Parking. Aberdeen is facing a problem getting teachers, both schools experience this. Based in an affluent area of Aberdeen also adds problems in recruitment from the local area. To keep competitive Aberdeen City Council have to look throughout the city, the country and abroad for recruits to teaching. It's highly likely that teachers will have to travel to the new school. Public transport in Bridge of Don is not great, but do we expect teachers to live in the centre of the city? It's more likely they will stay in many different locations throughout Aberdeen and like most Aberdonians will have to rely on private transport. There presently is 18 car parking spaces plus 3 disabled. So if teachers require to take their car there is no spaces at present for the current number, so what will it be like in the future? What does the present school do? And how will this effect locals and traffic problems, of which Bridge of Don is infamous.
7. Kids drop off. In a world full of dreams, kids would be able to walk to school and play happily outside, walk home. In Aberdeen we suffer from many things that make this impossible. Firstly is employment – employers have already bent over to try an accommodate flexible working due to the traffic problems notorious in Bridge of Don, however most flexi time runs core hours of 10-12 and 2-4. Glashieburn is at the edge of the proposed catchment area, a walk from the edge of the proposed catchment area to the school will take just over 30 minutes for a grown adult (I wouldn't go as far as fit), a 1 hour return trip for a parent (Ashwood Road to Glashieburn School) or 8 minutes in a car? In the real world parents will have to take the car. If a working parent left their house to get to school for drop off time, make it home, jumped in their car for work, they would have 30 minutes to get to work – which in Aberdeen is impossible if you work anywhere south of the Don. But even without work, Aberdeen is not known for its sunshine and warm weather, in the winter the walk home or to school is done in the dark. So parents and carers will HAVE to use the car, and there is no local area for safe dropping off children. This will mean parents parking, causing havoc for locals as well as adding more traffic to the already well documented problem!²

² See Image 1 – Glashieburn 2001 C. Google

8. The Outside. Giving the kids the smallest GIFA per pupil in Aberdeen is bad enough, but let us look at the outside size of the school. If we compare the land around Middleton Park



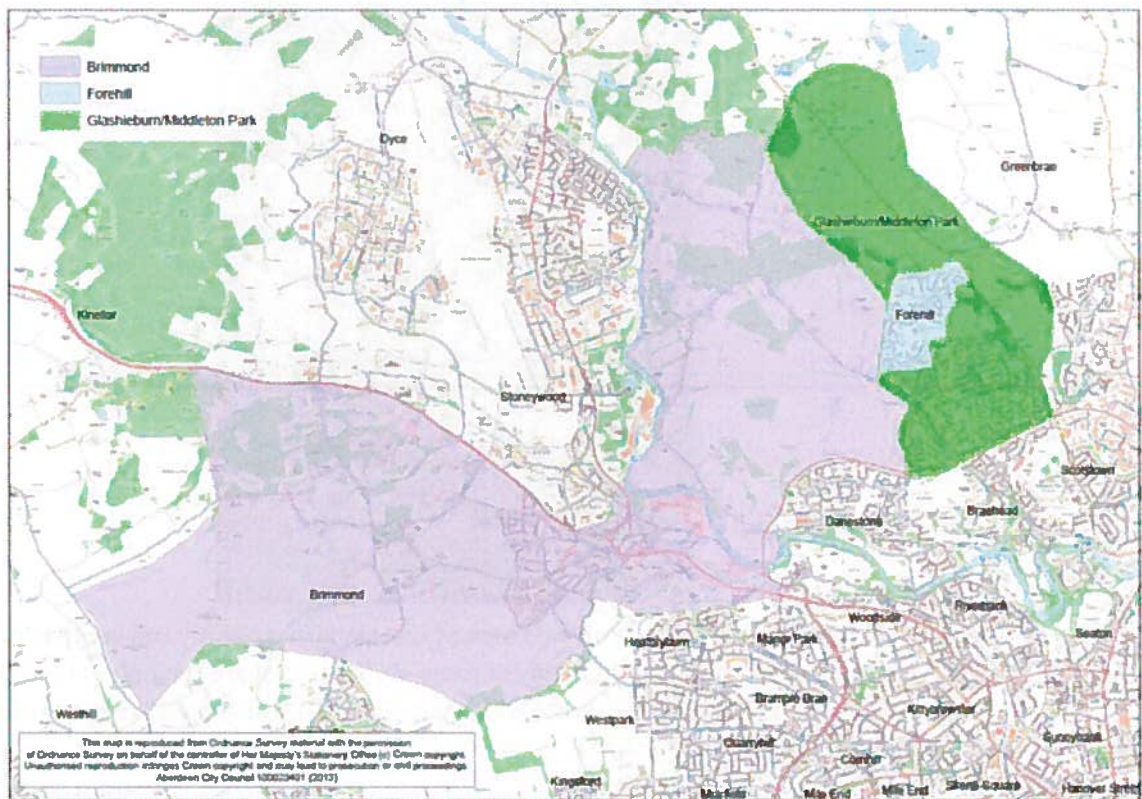
To the land around Glashieburn



Anyone can see that the outside area of Glashieburn is slightly smaller than present at Middleton Park, so kids used to plenty of room will have to share their play area with 180 more kids. So both schools green areas will take a heck of beating, these images were taken during the summer (google images)

9. ASN – Glashieburn is presently the ASN for Old Machar, it's provisioned for 12 pupils and won't increase but the limit is 14, is this limit changing? However some of these children require peace and quiet. I would imagine the school will have to provision shifts in playtime and lunch time, this reduces the chance of quiet time.

10. Lunch time at the new School – This question was asked at one of the consultations, the reply was Kingswells and Cults have similar numbers, however Kingswells being 500M2 larger and Cults at 5526M2 is nearly twice the size of this proposed new school. Kingswells was built in the 1980/90's and Cults in a similar timescale to Glashieburn, but both are bigger, designed better and are centre to the community allowing many more kids the ability to walk home for lunch than Glashieburn due to the next point. The answer would be lunch would be staggered – the design of Glashieburn with 2 smallish gym/eating areas is difficult enough, but now we want a continuous procession over an hour. Separating age groups, friends and families.
11. The very edge of the catchment area. The new school (although we've established it's not a new school just a paint job) will be 120 yards away from its Eastern edge of its catchment area. The majority of pupils will come from the west. This means the school is far from centre, not a requirement I know, but it means it will be a much longer distance to get from A to the school for kids to go home for lunch. So more kids will have lunch at school, putting more strain on a already proven failure of the new school. 460 kids being fed over a 60 minute period is 8 a minute, even if 50% of kids go home that's 1 kid being served every 20 seconds – not a good plan at the best of time, but add that the kitchen is small, then the council are hoping for plenty of packed lunches.
12. Brimmond Primary and the ever chaning Catchment areas.



This is the proposed stop gap between the new school and the development of Granholm. We were told at present this will effect just 1 child. 1 or 100, you got to be kidding – crossing the Haudagain roundabout at school time! Let's establish some facts here – Crossing the Haudagain is a nightmare at the best of times, at school time is just not worth

it. The traffic is dreadful, but lets assume you do make it to Brimmond, the kids from the Bridge of Don will have to be taken there – this is a cost to the council, for now one kid. The consultation says it will stay this way till the Grandholm estate builds their first school. The first primary is expected as part of phase 2. Phase 1 is 600 houses, and phase 2 is 1,600 houses. Developers don't normally build the school, or give the money to the council to build until the houses are all sold (or a given number – an example is a junction in the south on the A90, it has to be built before the developer sell their 1,744 house – of course the developer stops at 1,743 till they can be bothered).

So you could have 2,200 homes with 0.25 (it used to be 0.35 kids per household, but for this consultation only it's been reduced, again another flaw in the report – you can't change these things to make the document better) that's 550 kids before the new school is built! With Glashieburn at 95% capacity they will have to be rezoned to other schools.

Its true these developments won't happen for a while, maybe 2-3 years. But we will have phase 1 first, 600 homes, that's 150 kids – where are they to go? Brimmond will have a new school, but the by-pass will still be 2 years away. This number would max out Danestone, Forehill and Breahed based on current projections. Greenbrea will be maxed out already with the development at Dubford. And the answer from the council is to close Middleton Park?

13. Middleton Park is old and run down, costing lost to do up. No argument here, yet the parents are in uproar that the solution is to move their kids into a school that is just as run down. The council only spend money on C and D ranked items in the school condition. So to make Middleton Parks C and D disappear will cost £332,721, Glashieburns will only cost £92,975. A saving, yet if you were to take both schools to A (where we want schools to be, and what will happen as A slip to B to C etc) Glashieburn will cost £2,475,921 and Middleton Park £1,228,986³. This means as the schools get older and B's slip into C's it will cost much more in maintenance for Glashieburn to continue. Keeping both schools would cost more, for sure, but in the long term a new school is the solution, and a new school at the Middleton park campus is much better – centre to the area and convenient to get to.

I have put forward 13 points – non are educational. These points are just based on solid common sense. The council have to save money, we all understand that. But closing schools that we know will be required in 5 years' time is very short sighted, very negligent and just plain wrong.

I am no teacher, nor education professional. But I know you can not teach 460 kids the same way you can teach 250. The 250 who already are in Glashieburn will suffer – there is no way you couldn't.

Please reject this proposal. Save money in other ways (stop sending councillors abroad for example, do we really need so many non teaching people in the council HQ?) There are better ways to save money!

³ <http://www.aberdeencity.gov.uk/nmsruntime/saveasdialog.asp?IID=52966&SID=23865> and <http://www.aberdeencity.gov.uk/nmsruntime/saveasdialog.asp?IID=52958&SID=23865>

Dear sir or madam,

I am writing to you to voice my concerns over the proposed merging of Middleton Park and Glashieburn Schools.

I truly believe to go ahead with the proposed plans will be detrimental to my child's education and that the document fails to deliver facts and data to prove an education benefit.

Please see below for issues/questions I have:-

Section 2.1

*"This proposal intends to create a **new** school that is **sustainable** in terms of numbers of pupils, nabling a wide range of experiences through the formal and informal curriculum to be delivered."*

It's not a '*new*' school you are proposing simply merging two schools.

I feel that had the option of a new built for purpose school actually been on the table this proposal would have had some support from the community.

How can this be "*sustainable in terms of numbers*" of pupils when you open doors on new primary your roll would be only 25 pupils short or full to capacity and in section 2.4 you state that demographic trends for Aberdeen city are showing an increase in primary pupil numbers? I know it has been said that the new schools to be built in years to come would take away some of the roll but has this been truly calculated and have the house builders guaranteed these new schools??

*"An amalgamated school will provide **improved** opportunities to meet emerging expectations of Curriculum for Excellence."*

How? What is your evidence to support this? All I can see are statements with no real evidence or data.

Statements to support?

Some, but not all, of the benefits of providing a fit for purpose school estate are:

An efficient management of the changing demands for educational provision as a result of changing demographics, including significant housing developments in the vicinity;

I cannot even work out exactly what this is referring to? I presume its saying the council will be ready for the change in demographics which will occur in the future .This does not prove "improved opportunities to meet emerging expectations of curriculum for Excellence"

Improvement in transitions between Nursery and Primary and between Primary and Secondary;
How will merging the schools make the transition from Primary to Nursery easier than it currently already is at both schools?

Greater flexibility to deploy a more significant pool of resources to provide greater opportunities for all pupils

Again please state the facts to prove this. What pool of resources is this referring to? More teachers or teaching resources (ie equipment)?

Greater flexibility of staffing allowing opportunities for further development of partnership working and enhanced opportunities for staff to share experiences and expertise in all aspects of school life;

It would be great if this were true 100% but I suspect when you put kids and teachers into such a cramp environment (which is what you are proposing) I think this new school will actually be detrimental to both teachers and kids. But I guess there is no proof/fact either way?

Larger schools with more staff which will allow teacher expertise in particular specialisms to be exploited giving greater opportunities for pupil participation in languages, sports etc. This is also in line with the national initiative "Active Schools", aimed at improving health through fitness;
Great, can we prove there will be enough space in the merged school to provide to facilities to allow this?

Reduced expenditure on maintenance and upkeep which will allow investment in education, greater support of curriculum resources, enhanced learning and teaching and Continuing Professional Development.

Does this mean money saved would be used for the education of the pupils who attend the schools involved?

In Scotland, local authorities have a statutory duty to ensure adequate and efficient provision of school education.

I was under the impression that it was written somewhere that In Scotland when a school closure is proposed the local authority has to prove education benefit for all children involved.

2.2 The Need for Change

The current zoning arrangements cannot be sustained as the projected pupil numbers at Middleton Park will exceed capacity by 2018, due to the proposed housing development at Grandhome Estate.

A straight forward solution would be to increase provision on the Middleton Park site. This, however, would result in the pupils from the new development at Grandhome being educated outwith the self-contained community which is proposed for Grandhome.

The development includes provision of up to three new primary schools and a new secondary school.

An alternative solution, which would have advantages in the longer term planning and management of schools in the whole of the north of the city, is to amalgamate Glashieburn and Middleton Park Schools to create a new school and to establish new zones within the Grandhome development.

This is proposed as the roll at Middleton Park will fall when the new schools at Grandhome begin to be delivered and there is more than sufficient capacity at Glashieburn to accommodate the pupils from Middleton Park.

No information has been provided on when these houses will be built, when the schools will be built. There is mention of August 2016 but this is not a firm date and there is no note of roll numbers for the new schools.

Are these schools guaranteed by the house builders? What if it turns out there are not as many houses built or not as many kids to provide for as projected? Can the house builders pull out of building the new schools?

I believe it has been said by the council themselves that it has been pretty difficult in the past to get house builders to follow through with building schools (I may have picked this up wrong?)

2.3 Transformation Programme Objectives

Aberdeen City Council is committed to improving the learning environments for all pupils by:

Ensuring Aberdeen's pupils and teachers have school buildings fit for the 21st Century;

If this is the council's policy, why are they proposing cramming all our kids into a building which will give our kids one of the worst schools for space per child?

increasing the number of young people attending schools which provide the optimum curriculum choice and flexibility, and to deliver the full range of extra curricular activities;

I worry about this as there will be limited space from the first day of opening in the merged school. With the proposed changes in nursery provision a lot more parents will be able to use school nurseries as a means of childcare for allowing them to work leading to even more children requiring school nursery places.

increasing the number of pupils attending new or refurbished schools;

It's a shame that you state this in your consultation document considering a NEW (purpose built) school is not the table. In fact you are not even proposing a refurbished school, only minimal works.

2.4 Current and Projected Service Trends

Demographic data provided shows Primary and Secondary Rolls only, no details on Nursery rolls.

I think the projected nursery rolls (taking into account the new government nursery provision as of next year) could lead to further questions over space in the merged school.

2.5 Educational Considerations

The consultation documents outlines the curriculum for excellence and actually states that "the formal classroom layout of many schools does not lend itself to implementation of Curriculum" My worry is that there is so little space in the merged school that flexible layouts will not be feasible and provision of specific learning spaces (ie computer room, library etc) will be out of the question.

I would like to see this space issue properly planned out to reassure us all that this will not prove detrimental to our children's education.

It is simply not good enough to say it is the head teacher's responsibility to work out the teaching spaces.

3.2 Rationale for Proposals

The projected roll at Middleton Park, under current arrangements, will exceed its capacity by 2018. Will the New Grandholm schools be built by then?

When the Grandhome development is removed (pupils will be zoned to one of the new schools), is relatively small and decreasing. It would be the second lowest of all non-denominational schools by 2015.

But Graph 5 clearly shows that the predicted number of pupils from 2016 onwards will increase steadily, has this been taken in to account?

Glashieburn School has sufficient un-filled space to accommodate all pupils from the proposed revised catchment area, without any significant interior or external alterations having to be made. Is this still the case?

Once the first of the proposed new schools within the Grandhome development is delivered, it is projected that there would be approximately 230 un-filled spaces between the two schools. When will this be? How many years away is this?

If the additional pupils from the Grandhome development are accommodated in the new schools within the development, the roll at Middleton Park will decrease to a level which is the second lowest for a non-denominational school in the city by 2015.

Will there be a new school built by 2015? How many pupils will go there?

These statements are disjointed and are saying

Section 6.6 – School Travelling Routes

The report acknowledges that the schools are relatively close together and travelling times to the proposed amalgamated school would not be significantly increased for pupils.

I am still concerned about this issue as it will be further to travel for a number of pupils. I myself do not have a problem with walking my child to school unfortunately when the weather is bad I have a small child to consider (as do many other parents) and taking the car and parking seems to be a major issue at the proposed site.

It recommends improvements in safety measures on the main road and these will be formally evaluated and implemented where appropriate, in addition to addressing issues related to increased traffic movement around the amalgamated school.

The road around this site is already very heavily congested so this is a real worry. I wonder if the cost of improving safety measures in the area has been taken into account?

8 - The Amalgamated School

The combined school will provide accommodation for up to 460 pupils (revised capacity of Glashieburn School as a result of internal reconfiguration).

Internal reconfiguration – what is this?

There is, at present, no evidence to suggest that significant enabling works would be required to accommodate the additional pupils within the Glashieburn building. There are various approaches to re-configuring the accommodation at Glashieburn to make more efficient and effective use of the available space.

Is this still the case?

I have heard things being said like “covering over the courtyard” and “knocking down walls”?

A detailed evaluation of the alternatives will be carried out and options presented to staff and parents/carers in advance of deciding upon a recommendation to Committee.

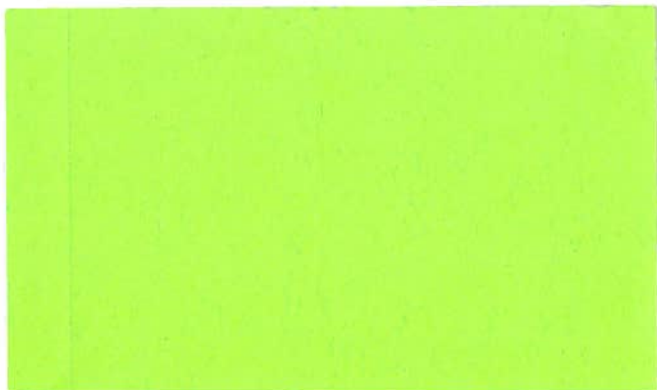
Surely this should have been done initially and provided with this document?

Outside Space

Has the outside space the kids currently have and will have in the merged school been looked at? It seems that the new merged school would have very little in the way of outside space per child.

Would this be the case?

Sorry this is so long and disjointed but I was trying hard to ask the questions I wanted answered in a clear manner which would be easy to follow.





I write in reference to the proposal for the reconfiguration of Ashieburn Primary schools.

I write as a representative of the community.

There are multiple problems with this proposal but I would like to concentrate on just a few.

It states that children from the new Grandhome development will be zoned for Brimmond School – this is across in Bucksburn. To reach this school the parents of the children would have to cross the River Don. There is insufficient infrastructure to cope with the traffic at present. My run used to start at 8.15 am. I am now collected at 7.30 in order to ensure we can collect the 2 children who come from across the river prior to continuing with the rest of the run. Last Monday the whole of Bridge of Don was at a standstill due to one small accident. These children will be subjected to a lengthy journey in time and mileage twice per day. However this won't be the case as if the proposal goes ahead Grandhome will be then magically be rezoned for Danestone. It is extremely worrying that there were no current or projected figures for Danestone School.

When zoned for Danestone these children will then have the joy of trying to cross one of the busiest roads in Aberdeen at the 2 busiest time of the day – not conducive to a happy learning experience.

I also have concerns about the lack of space within the reconfigured school. The ASN children will have to adapt to being in a much confined space with higher noise levels than previously – not conducive to learning.

These children are known for not taking to change – so the school experience for them will not be right.

I also have grave concerns about safety outside. The playground is not that big at present so will be even more crowded with more pupils.

I have concerns about Fire and Safety issues and road safety issues - none of which were addressed within the proposal.

These are only a few of the main concerns I have – but due to time constraint I will leave it there.

It would appear that the proposal was set up to fail from the start which will be a great relief to many within the area.



Dear city council

I have written to tell you that merging
Glashieburn and Middleton Park is
absolutely idiotic.

The Glashieburn assembly's are already full!

If you add more in we will be crushed!

Letters are going around the public

says stop do what they tell you!

The merging is arrogant, stupid, pea-brained
and it's failure chance is 100%!

It's the titanic all over again!



Hello, I'm a former pupil of Glashieburn Primary School and here I will write about why Glashieburn Primary School and Middleton Park Primary School shouldn't merge. I was at the meeting on 1st October and I have a view points I think I should make. For starters at the meeting a primary 6 asked a question and someone from the Education committee answered it in very confusing terms that even I didn't fully understand. And also some other people asked questions and the reply was very vague. One point that made me chuckle was the fact that when Ewan Paterson asked for a show of hands of those who want the two schools to merge no-one put their hand up (even the Education committee).

The first points I'm going to make is about the Library and the Computing suite. On the plans there is no computing suite or library. This makes me extremely worried because these facilities are very important. For instance reading is extremely important. If you are a good reader and read lots of books you will gain a very good vocabulary which can help you with creative writing and maybe even essays. If these children of Middleton Park and Glashieburn don't have a library, or don't have a big library this could effect there literacy skills in a number of ways. Also I've heard that the library is now run by adults and parents which are volunteers who don't get paid. If the library moves or there turns out to be no library all the hard work put into it will be destroyed. Also the computing suite is a very handy place to have in a school. It has computers and a whiteboard and this kind of access is good for teaching pupils about computers and what they do, finding out about different topics as a class, and/or doing some extra work for maths or English! With this idea of no computer suite but more computers and electronic devices (laptops, ipads etc.) in classrooms (discussed at meeting 4) it would cost more money because you would need more computers and electronic equipment for each classroom! Also how are you councillors planning on paying for the idea of open space classroom plans where you knock this wall down and that wall down (to be honest if you do go ahead with this ridiculous idea, the constructors would have to watch that the whole school doesn't collapse because of the amount of walls they would've demolished). We all know that the council is short of money at the moment (well so they say). Also at the moment the classrooms and class areas are noisy enough, never minding all this stupid ideas of making it open spaced. If the classrooms get put how planned what will end up happening is the teacher and pupils will be raising their voices louder and competing with each other to get heard. This might explain why noise and interruptions from other classes and in general might not be so good.

Noise/interruptions



Harder to Concentrate



Not taking in as much information



Not learning as much



A less better outcome when go to the academy

The next points I'm going to make are to do with the PE hall! In the 2 PE halls many activities happen. But these halls aren't the biggest and can be really tight for space! PE is a very good subject and it also helps the pupils fitness whilst they are learning and doing some physical activities. Physical Education is very good in schools

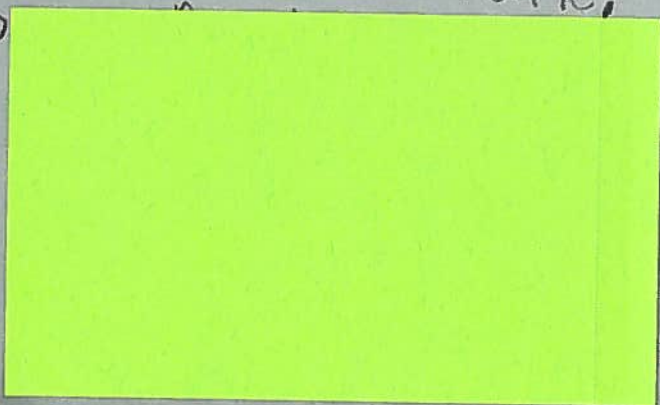
because sport is part of the way most people would say to keep fit and some parents might not want to pay for extra activities after school if the amount of time doing sport gets smaller so every class can do PE every week. Also with sports you would have to be able to fit in school assemblies and school shows. The PE hall is also used for lunch. At the 4rth meeting they mentioned an idea which would make the queue not so big at lunch. This idea would be rotating who gets to go first and so on for lunch to make the queue shorter, I presume you don't know how the lunches at Glashieburn School work but they actually do this idea now, and when they did it when I was at school the queues were still super long! Also some other problems with lunchtimes are that the halls are not big enough and that there is not enough food! Also when the lunch bell rings that is when all pupils get ready for lunch. For lunch at the moment the Glashieburn pupils only get an hour. With the addition of pupils and so on that are definitely not needed, this would mean the pupils would have more boring waiting around inside to get some lunch than having fun enjoying the fresh air outside. Another thing about the lunch/PE hall is that this is where they hold assemblies. How are you meant to be able to hold all these children in 2 halls for assemblies with quietness, and reasonable space at the front (for if they need the projector or if some classes are doing assemblies and so on...). Also sometimes the schools put on school shows that they have been working on. If these schools merge the children would have to do more performances, there will have to be more room on the stage and around the stage for people to move and sit and for more people to fit in, and if they do not perform enough shows the parents might get upset because they cannot see their child perform!

In this next paragraph I will start off by saying how the safety could be affected. For instance in a fire situation it may be harder to get these children out the building really quickly and count them all up because of the jam-up it may hold in the playground! Also walking around the school and everything could get very tight and some people may feel uncomfortable. Everything will probably run alot slower as well. Also some people in the base who have certain conditions and so on may feel pressured because like we all heard from someone who has one of these conditions at the meeting, some people might not like being in confined spaces and more people in this school equals less space. Also if more people you will obviously need a lot more staff. This school closures and reopening a new school which will be moving into Glashieburn Primary school can also affect traffic around bridge of don and can also effect the environment. Throughout primary school I was always encouraged to walk to school, but now lots of pupils will have to take the bus/car because they might not be able to walk that far at their age.

Dear Council

I love Middleton Park so
much. There would be not
enough space outside of Middleton
Park moved into Glashieburn and
we could get hurt easily. There
would not be enough space for
everyone to play football.
Middleton Park has a bigger
field than Glashieburn. I
don't want us to
be in a youth centre to a squash. Would
squash at school? Please don't
close Middleton Park!

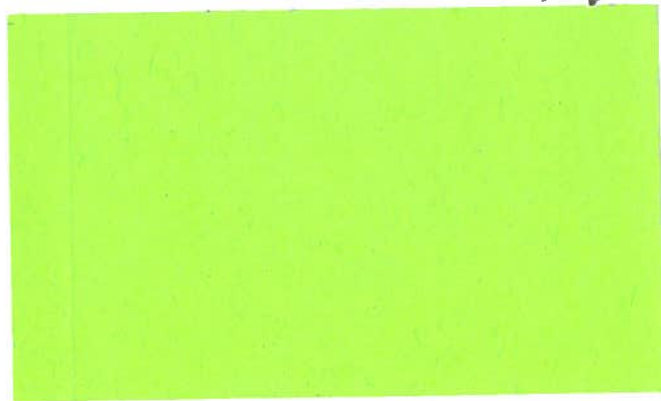
From



Dear council

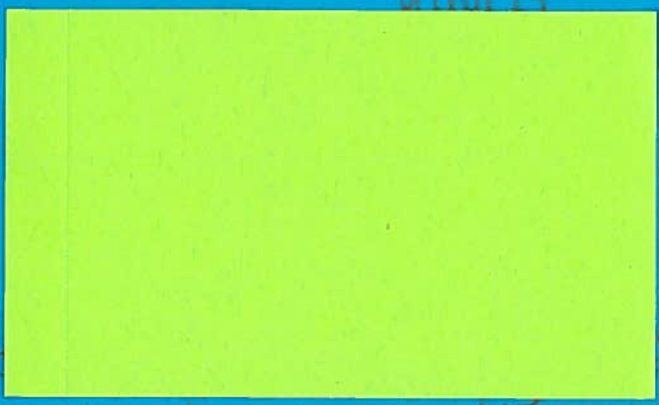
I love Middleton Park so much. There would be not enough space outside if Middleton Park moved into glashieburn and we could get hurt easily. There would not be enough space for everyone to play football. Middleton park has a bigger field than glashieburn. I don't want us to be in a squash. Would youth like to be in a squash? at school? Please don't close Middleton Park!

From





21/01/13



Dear sir/madam

My name is [redacted] I go to the best school in Aberdeen St Middleton Park Primary! I love my school and my teachers because they teach me all the things my mum and dad don't know. In Middleton park we all are happy because there is enough room for us all and we get enough time to eat our lunch. My brother is in nursery and has been looking forward to coming to Middleton park school. He comes to assembly already and loves it! please let him come and don't close our lovely school or S-lashieburn as the boys and girls love their school too!

