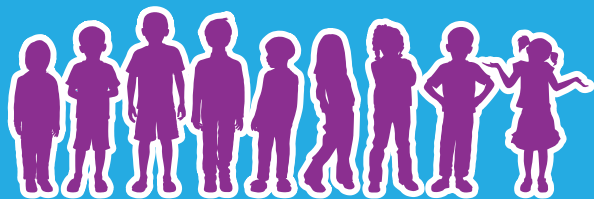


'Burst Primary'

the facts & figures

$$1+2=3$$

EDUCATION OR BURST?



1.0 | INTRODUCTION

Education or Burst? is the campaign group strongly opposing Aberdeen City Council's plans to merge Middleton Park & Glashieburn Primary Schools into the current Glashieburn campus.

We are a group formed by the Parent Councils of both schools. We welcome beneficial change and are keen to work with the local authority to deliver this.

However, we are firmly against the proposal to squeeze Middleton Park & Glashieburn pupils into the existing Glashieburn school.

There are a variety of serious concerns regarding the amalgamated school which will rank bottom of the league in Aberdeen because it will:

- Provide the least gross internal floor area per child
- Provide less than half the statutory requirements for outdoor space
- Have the third highest school roll numbers
- Be the most cramped school

It is for these reasons we have named the school "Burst Primary".

Education or Burst? question how the council could possibly believe their proposal is the way to deliver educational benefit to our children? Burst Primary will not be suitable to deliver A Curriculum for Excellence and quite frankly, the children won't fit. This document provides and illustrates irrefutable evidence that there is no educational benefit in the creation of the most cramped school in Aberdeen.

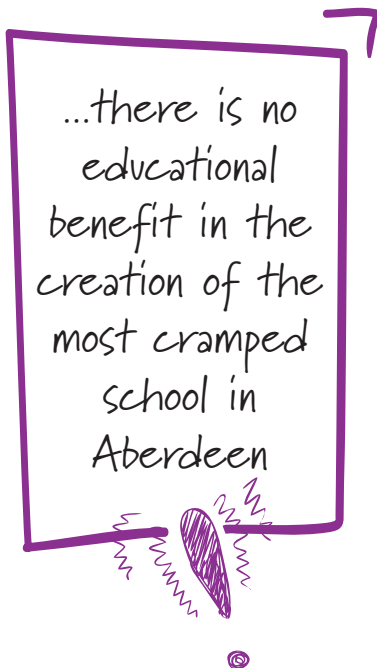
What is best, Education or Burst?

1.1 | THE FACTS & STATS

The school will not be fit for purpose.

- Catastrophic internal space issues:
 - **Only 6.6m² per pupil**
- the lowest space per child in the city
- External space constraints:
 - **Only 45% of the statutory requirements for a school of this roll**

$a^2 + b^2 = c^2$
 $1 + 2 = 3$





Middleton Park Primary children enjoying enough space now to learn and develop.



2.0 | ROLL CALL!

Burst Primary will have the second highest roll in Aberdeen, creating the most cramped school in the city



The 5 Aberdeen schools with highest total roll

School	2012 Roll	2012 Capacity	2012 % Capacity	Gross internal m ² per pupil (2012 roll)
Cults Primary	477	540	88%	11.0 [^]
Burst Primary[#]	435	420	104%	6.6
Kingswells Primary [*]	428	450	95%	7.6
Walker Road	406	420	97%	10.5
Mile End [*]	372	415	90%	14.8 [^]

^{*} school intake limited according to number of classes the school can provide - roll capped

[#] Burst Primary School is the combined total of Glashieburn and Middleton Park for the roll figures and the current Glashieburn facility not accounting potential future modification for the capacity and space per pupil

[^] these schools have other services hosted within the building - we have asked for these figures but have yet to receive them.

Source ACC Consultation website

The officers tried to discredit this situation but they were using the wrong figures and now admit that Burst Primary would be the most cramped school in Aberdeen.

There have been suggestions that the external courtyards could be covered to form internal space. However, even if implemented, Burst Primary would still only have 7.4m² and have the least space per pupil at any school in the city. Additionally, according to the officers, these uncostered modifications would increase the capacity to 460 reducing the space even further. Furthermore, these figures do not include the additional 60 morning and 40 afternoon nursery places bringing the roll up to almost 500 pupils attending Burst Primary.

2.1 | IS BIG BEAUTIFUL?

Burst Primary would be a large school by Aberdeen standards. One of the major themes of the Council's proposal is that there would be benefit in increasing the number of pupils at the school. However, educational literature that is available favours smaller schools. Leithwood & Jantzi in 2009, evaluated 57 studies of which 10 were primary schools and this showed:

- NONE demonstrated an increase in achievement with an increase in school size.
- Six of the studies had an inverse relationship with school size i.e. the smaller the school, the better the achievement

The educational benefits statement in Section 7.4 of the proposal states:

Schools with relatively small rolls have some curricular limitations mainly due to the relatively small number of children and staff. It will be possible to expand personalisation and choice in a larger school. This is likely to have a positive impact upon motivation by focusing on the interests of individual pupils.

However, studies such as the frequently cited review by Cotton, published in 1996 conclude that:

- Student academic and general self-concepts are higher in small schools
- Levels of extracurricular participation are much higher and more varied in small schools
- Students have a greater sense of belonging in small schools

Burst Primary will be the most cramped primary school in Aberdeen with the children forced into the smallest space per pupil. If there was a clear educational benefit, maybe this would be an option.

However, evidence clearly indicates that there is no benefit in a larger school and in fact the larger school in itself may be detrimental.

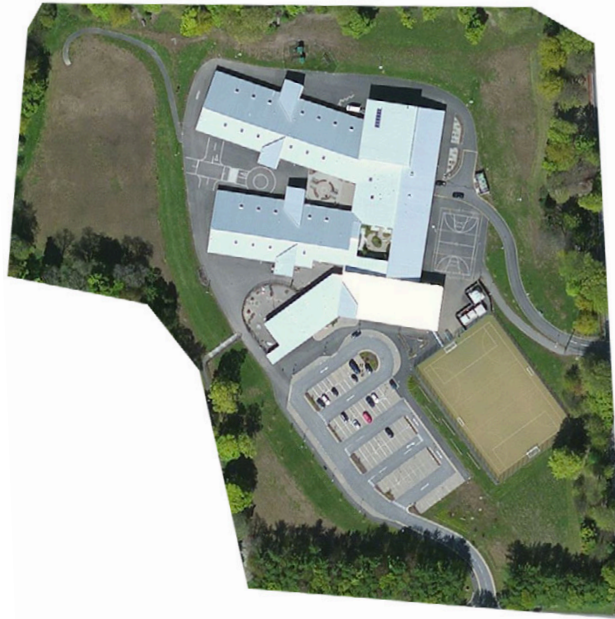
For Burst Primary BIG IS MOST CERTAINLY NOT BEAUTIFUL.

These images, captured from Google Earth at the same magnification highlight that Burst Primary is far too small for the number of children proposed to attend.

Also...

Do these represent a commitment towards consistent and fair provision across the city?

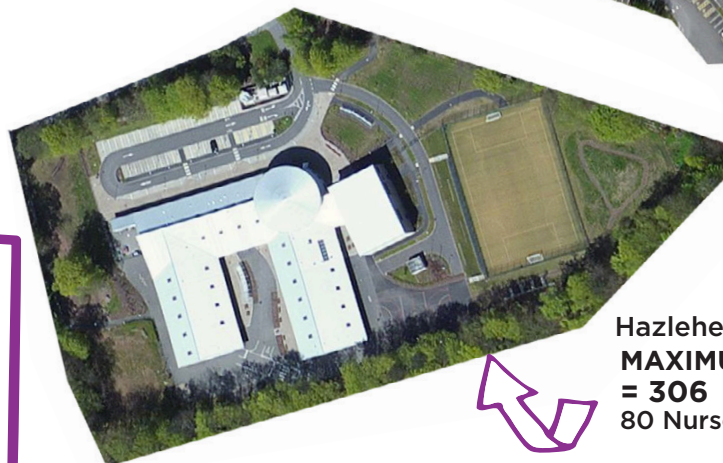
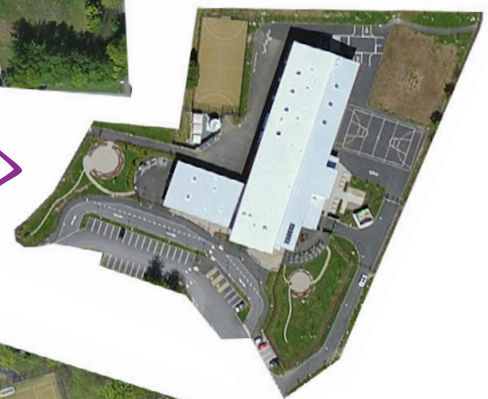
Mile End School
MAXIMUM Roll
= 415 (70 ASN)
80 Nursery Places



Burst Primary
MAXIMUM Roll
= 460 (14 ASN)
100 Nursery Places



Braehead Primary
(2 storeys)
MAXIMUM Roll
= 269
40 Nursery Places



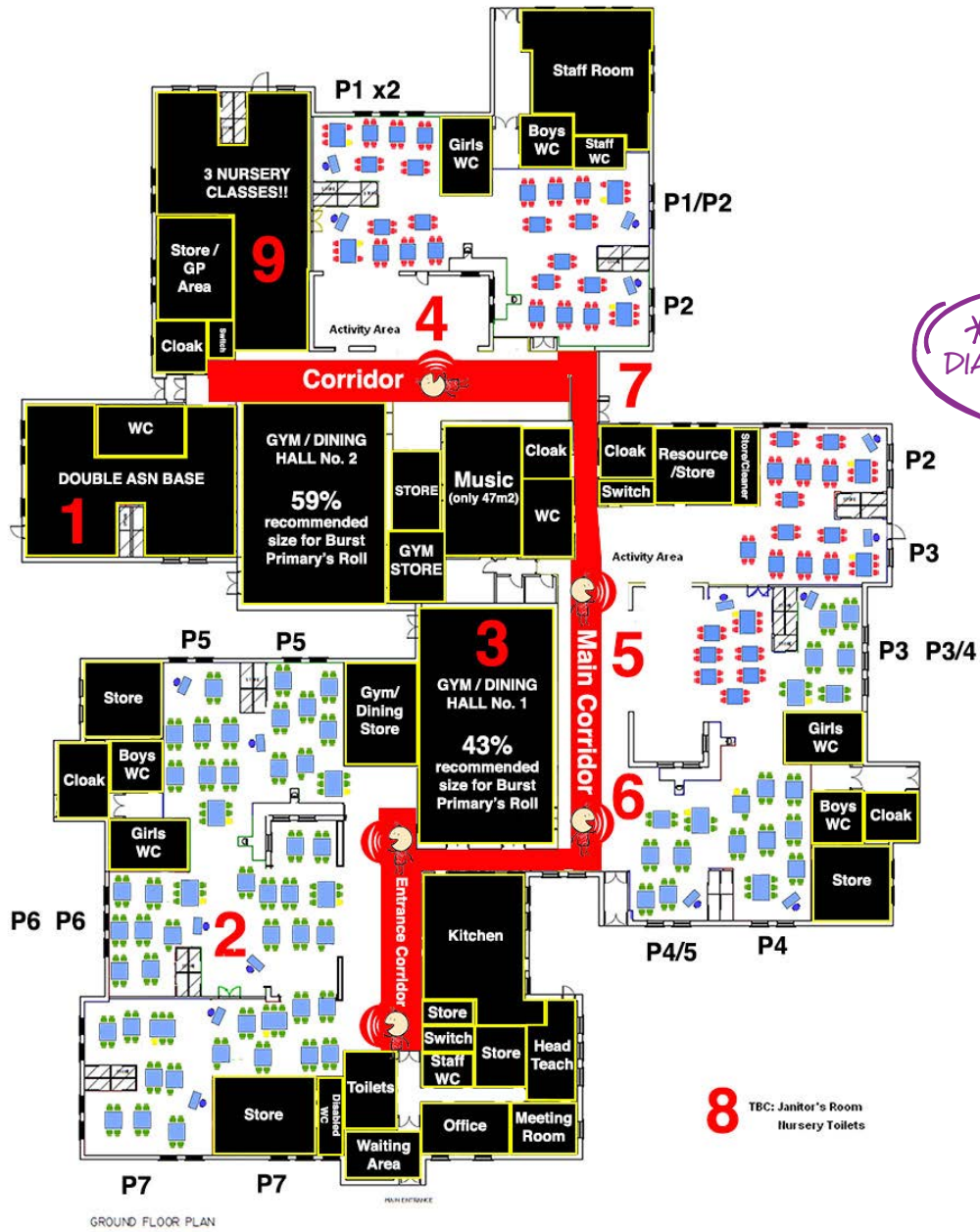
Hazlehead Primary
MAXIMUM Roll
= 306
80 Nursery Places

Middleton Park Site:
would almost certainly
be developed into
new houses. Which
school are these kids
going to go to?

QUESTION NEEDS
TO BE ANSWERED!

*Some of these facilities have a little extra space for additional services





*
DIAGRAM 1.



3.0 | INTERNAL SPACE

Burst Primary will provide the least gross internal floor area per pupil of any school in Aberdeen

There is simply not enough internal space for the children at Burst Primary.

- 1. The combined roll of the Glashieburn and Middleton Park schools is more than the current official capacity of Burst Primary**
- 2. It is well recognised that A Curriculum for Excellence requires more space than the previous 5 - 14 curriculum.**

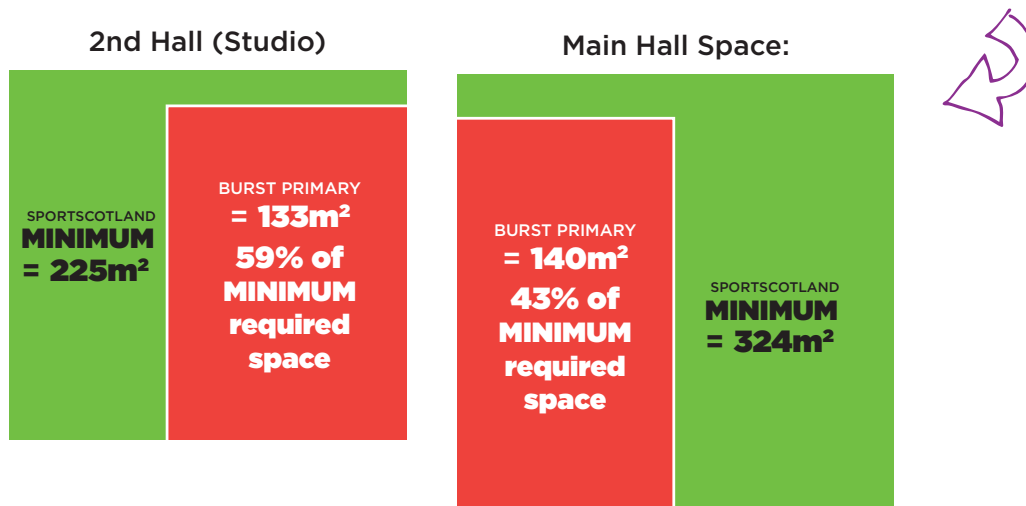
The highly accurate scale drawing (left) demonstrates that these concerns translate to shocking space standards for Burst Primary. Diagram 1* highlights how impractical the proposed new school would be. The desks are hard to fit in without even thinking about anything else a modern school requires.

The teaching spaces measure as little as 41m² with virtually no flexibility. Major modifications will be required if Burst Primary goes ahead. This is shocking compared to 3R standards and includes partial knockdown of no less than eight EXTERNAL walls and covering over the courtyards to make them part of the internal space.

The courtyards currently provide very safe, easily accessible outdoor space. Their loss would be detrimental.

3.1 | GYM HALLS

Burst Primary's gym halls will not be fit for purpose and grossly under SportScotland's recommendations. The gym halls will be under huge pressure. It would be impossible to meet the demands of lunches, assemblies, drama, choir, school concerts and shows, as well as meeting the statutory PE requirements.



The noise of movement to the two halls will cause significant disruption on all of the adjacent teaching spaces. Lunches will have to be staggered to accommodate the number of pupils, meaning adjacent classes are disturbed for a longer period of teaching time.

How can they be expected to excel in such an environment?

There seems to be drastically little in the way of cloakroom areas for such a large school and they have not been able to find space for the janitor's office or the nursery toilets.

Where will these essential areas go?



4.0 | EXTERNAL SPACE

Bursting on the inside, Bursting on the OUTSIDE
 - Burst Primary will provide less than half of the statutory requirements for outdoor space

In fact, Burst Primary's playing field fulfils the statutory requirement for only 140 pupils.

The satellite images right are captured from Google Earth at the same magnification. This clearly demonstrates the lack of outdoor space, compared to other schools in the Oldmachar ASG.

LACK OF GRASS AND GREEN SPACE

Burst Primary has a very limited amount of playground space for its alleged maximum roll of 460. Compare this with the beautiful open expanses at Danestone and Greenbrae which house significantly less children.

LACK OF SPACE FOR ANY EXTENSION

The recommendation is to move towards class sizes of 18 for P1 - 3, resulting in an increase in classes and space required. However there is a severe lack of external space for future extension.

LACK OF ACTIVITY AREAS

Burst Primary with its restricted external space, will severely limit children's access to outdoor play.

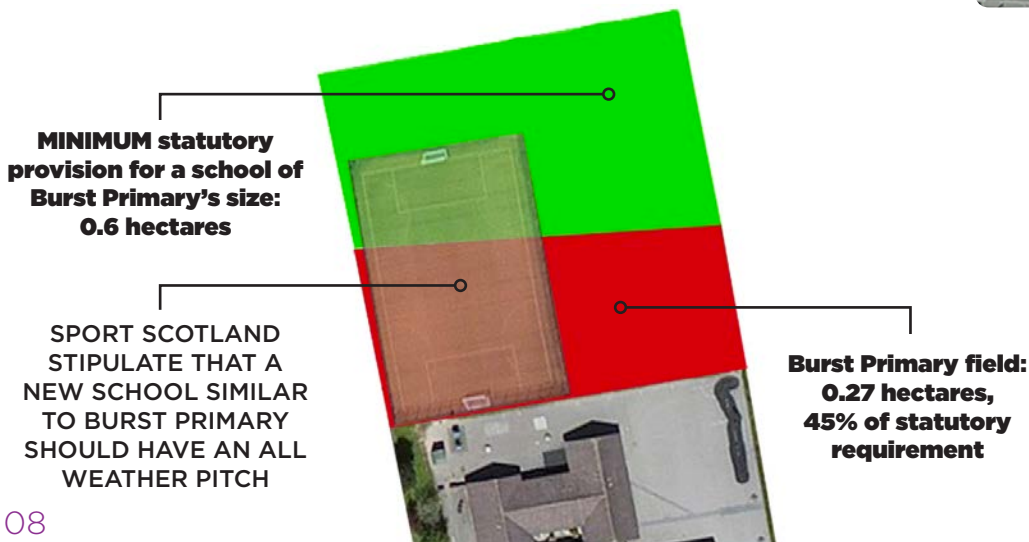
LACK OF NURSERY FACILITIES

There is no mention of separate protected space for the 3 nurseries. To implement this, the general external space would be further eroded.

The Public Consultation Document states in section 3.2 that:

"Glashieburn School has sufficient un-filled space to accommodate all pupils from the proposed revised catchment area, without any significant interior or external alterations having to be made."

Do the facts and supporting images highlighted represent the above statement? **Absolutely not.**



- 1 Forehill Primary: 185 Kids
- 2 Greenbrae Primary: 159 Kids
- 3 Danestone Primary: 187 Kids
- 4 **Burst Primary: 435 Kids**
- 5 Middleton Park: 180 Kids

Will our children no longer be able to enjoy outdoor space?





Burst Primary will have severely limited green and grass space.

5.0 | ADDITIONAL SUPPORT NEEDS (ASN) BASE

Burst Primary will host a smaller Oldmachar ASN base with no outside learning or enhanced facilities

The Oldmachar ASN base will be drastically reduced in size and moved. This will have a profound negative impact on the most vulnerable children. Despite this, the officers failed to carry out the appropriate Equality & Human Rights Impact Assessment and the plans show little regard for the welfare of pupils.

6.0 | NURSERY

The proposed nursery at Burst Primary will struggle to meet the minimum statutory guidance of 2.3m² space per child

The Nursery will be given the bare minimum of space in Burst Primary. Officers have not even made a decision on where the toilets will go.

Is this how you want your child to start their school career?

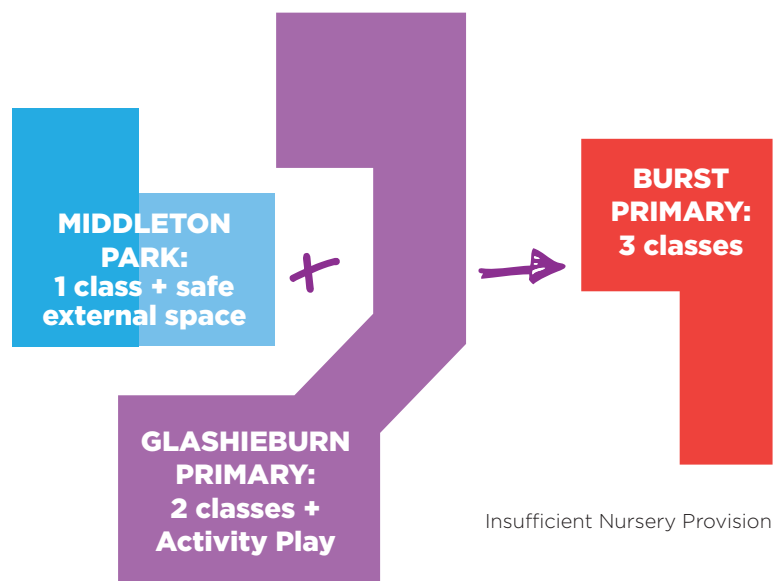
7.0 | TRAFFIC CONGESTION: No Safe Drop-off Zone & Insufficient Parking

Burst Primary will increase traffic congestion, provide no safe zones for drop-off and pick-up and there will not be enough parking facilities

A traffic survey of Middleton Park parents showed a greater proportion of children will be driven to school if attending Burst Primary due to safety, distance and time. This will hugely increase traffic congestion on Jesmond Drive and surrounding residential streets.

Other new council schools have safe drop-off and pick-up zones, but not Burst Primary. There is no space for such facilities which puts our children at higher risk.

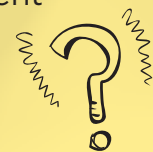
The space in the current car park is also completely inadequate to accommodate the extra staff who would be required for the additional children and classes.



Traffic issues:

- ✗ Unsafe for children
- ✗ Inconvenient for staff
- ✗ Frustrating for community
- ✗ Bad for environment

Who is this actually positive for?



8.0 | NO EDUCATIONAL BENEFIT

The officers have been totally unable to provide any evidence of educational benefit in creating Burst Primary. In fact there will be:

- No opportunity to enhance the depth and breadth of curriculum (Section 7.1)
- Less support available to pupils (Section 7.4)
- Less widespread and flexible teaching spaces (Section 7.3)
- Less opportunity for active, collaborative and independent learning (Section 7.3)
- Less opportunity for pupil leadership (Section 7.8 and 7.16)
- Loss of the flexible external courtyards - vital outdoor learning spaces
- Reduced space for the double ASN base (Section 7.9)
- Reduced space for a larger number of nursery pupils
- No opportunity for enhanced opportunities for gifted and talented pupils (Section 7.1)
- No opportunity to enhance teachers CPD (section 7.5 and 7.11)

There is simply NO benefit to any child in burst primary



9.0 | THE NEED FOR CHANGE?

The Grandhome development does not constitute a need for change

The Council's officers are focussing on an entirely fictional argument that the Grandhome development means our schools have to be closed and merged. Section 2.2 of the Public Consultation Document states:

“An alternative solution, which would have advantages in the longer term planning and management of schools in the whole of the north of the city is to amalgamate Glashieburn and Middleton Park Schools to create a new school and to establish new zones within the Grandhome development.”

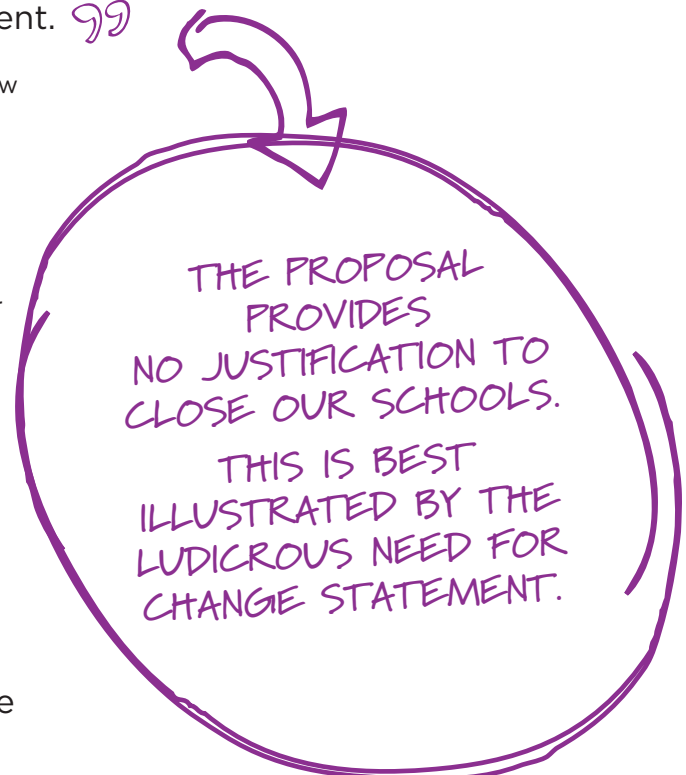
A development the size of Grandhome would always require new zones to accommodate the thousands of children that will live there. The introduction of this development has no bearing on whether Burst Primary requires to be created.

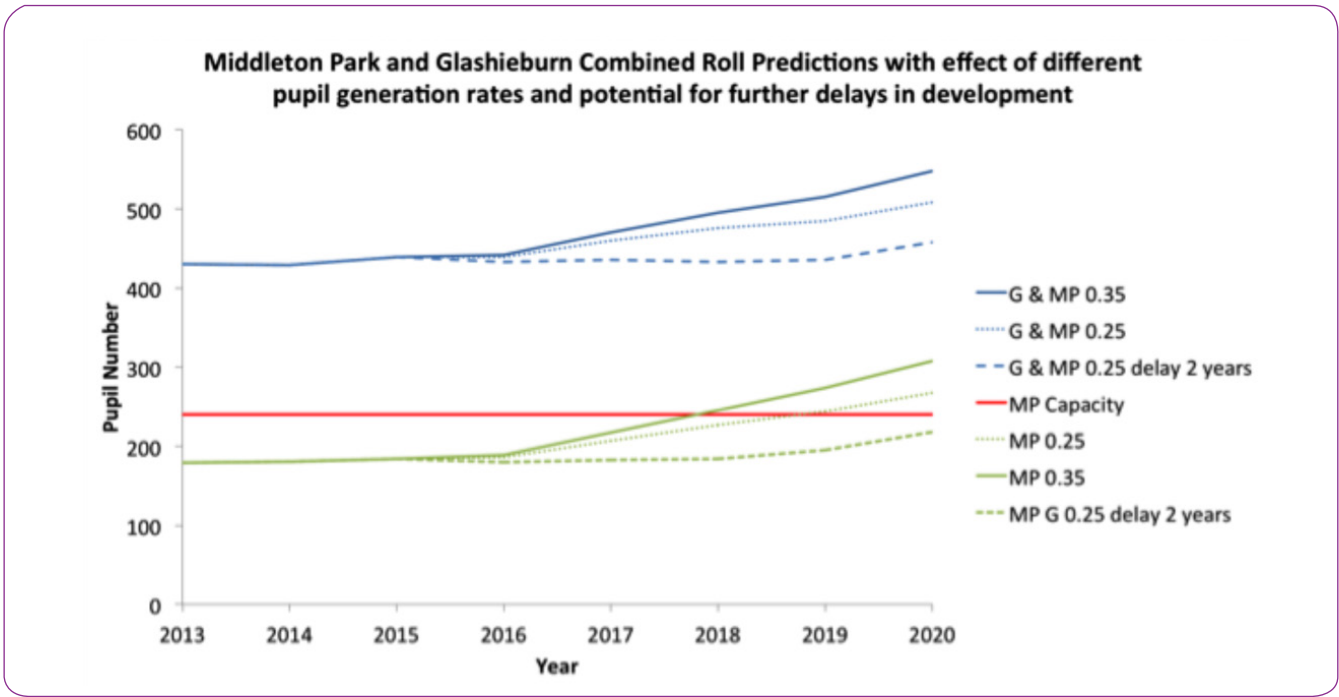
9.1 | INCONSISTENT FORECASTS

There are glaring inconsistencies regarding the roll forecasts for the Grandhome Development.

The officers have used a higher figure of 0.35 children per home when putting forward the argument to close Middleton Park and Glashieburn and form Burst Primary.

However this figure drops to 0.25 when calculating the necessary capacity to accommodate the same new children from the development into Danestone School.





The graph above highlights the stark difference in future roll numbers when the above numbers are applied. It also shows the effect of a potential two year delay in the development.

Which is the correct figure and can we see this consistently applied to all projections?

The Grandhome development CANNOT and should not be used as a valid reason to close our schools. There is no need for change and using the Grandhome development as an argument is an insult, particularly when numbers have been used to make the proposal appear more plausible.





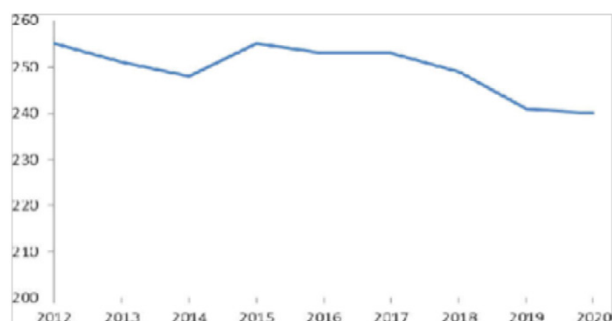
10.0 | ROLL FORECASTS

Aberdeen City Council's roll forecasts are misleading, unreliable and inaccurate

How to lie with Statistics:

Evidence leads us to believe that education officers are communicating misleading data relating to our school rolls. The graph below has been provided which illustrates falling roll forecasts.

Council's Middleton Park roll forecast

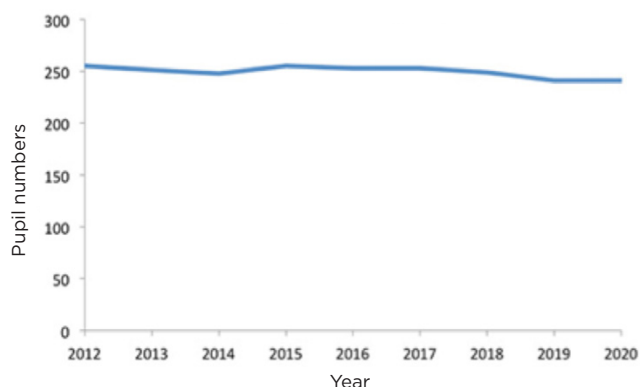


At a glance, this graph does show a decrease in roll numbers, however if you look closely, these are insignificant changes hugely exaggerated by starting the Y-axis at 200.

This is referred to as a "Gee-Whiz" Graph - see chapter 6 of 'How to lie with statistics' by Darrell Huff. In order not to deceive, graphs should be presented with the Y-axis starting at zero.

The graph below demonstrates the same data in a non-ambiguous way and proves the numbers are virtually static with only a tiny fluctuation in 2019/20.

Middleton Park roll forecast (Y-axis starting at 0)

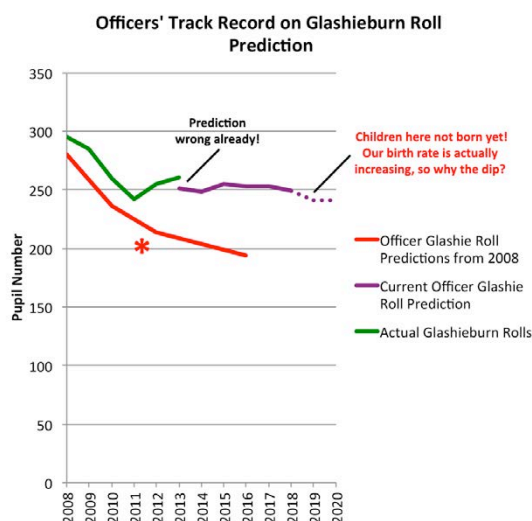
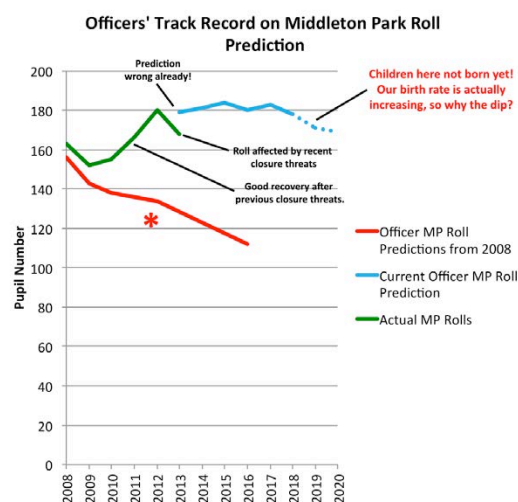


UNRELIABLE PREDICTIONS

- 2010 figures predict the Aberdeen City population aged under 16 will to increase by 24.5% by 2035
- The number of births per year in our combined catchment area increased by almost 17% between 2007 and 2011, which is not reflected in the officers' predictions

POOR TRACK RECORD

The proposed Middleton Park closure in 2008 provided yet more erroneous misleading data. Predictions were shockingly inaccurate and the graphs below clearly demonstrate a poor track record for forecasting roll figures.



The evidence clearly shows the Council's predicted changes are insignificant and totally unreliable.

There is nothing in the numbers to convince us our rolls won't be stable or even increase in the future as their roll predictions are already inaccurate.



11.0 | SUITABILITY

Burst Primary suitability ratings increased from a C ‘Poor’ to a B ‘Satisfactory’ without the consultation of key stakeholders

Until the Public Consultation Document was issued, Glashieburn’s suitability was rated by Aberdeen City Council as below:

	General Learning & Teaching	Internal Social Areas	Internal Facilities	External Social Areas	External Facilities	Total:
Functionality	B	B	B	C	D	B
Accessibility	B	B	B	C	D	B
Environmental	C	C	C	C	D	C
Safety & Security	C	B	C	B	D	C
Fixed Furniture & Fittings	C	C	B	D	B	C
Total:	C	B	B	C	D	C

If Glashieburn campus becomes Burst Primary it would house an additional 190 children. There are no confirmed modifications, however, the school has now been re-classified at a higher “B” rating.



This surprising increase is shown below:

Rating at capacity (roll of 460 pupils)

	General Learning & Teaching	Internal Social Areas	Internal Facilities	External Social Areas	External Facilities	Total:
Functionality	B	B	B	C	C	B
Accessibility	B	B	B	B	C	B
Environmental	C	C	C	C	C	C
Safety & Security	B	B	C	B	C	B
Fixed Furniture & Fittings	C	C	B	C	B	C
Total:	B	B	B	C	C	B

According to the government’s own guidelines, these assessments should heavily involve the schools, including the teachers and children. However, as far as we are aware, there was no consultation with the school, or any work done in any of the areas that have been re-classified. The data has been altered just enough to ensure Burst Primary is now an overall B rating.



It is also worth noting there are a number of C’s not shaded yellow, making it look more positive at a glance.

In order to consider Burst Primary, suitability should have been rated reflecting current facilities, roll and capacity including an extra nursery class.

Suspiciously, in the same timescales, the Middleton Park facility that the officers are trying to sell for housing, has inexplicably seen its suitability ratings drop.



12.0 | CAPACITY

Despite proposing “minor reconfiguration” to the existing Glashieburn site, the official capacity has been increased from 420 to 460 for Burst Primary

Realising that the amalgamated school will immediately be over capacity, the Council have increased the capacity to 460 following slight adaptations. Worryingly, the officers are not even sure what the capacity of the new school is likely to be following these modifications.

An Education Officer said:

“460 would be the proposed capacity of the amalgamated school should the proposal be taken further. Clearly it would be formally re-evaluated on completion of internal reconfiguration.”

In order to achieve the increased capacity, external courtyards are being converted to internal teaching space. This is not “minor internal reconfiguration” but significant enabling works.

13.0 | 3Rs

Burst Primary will never reach 3R Standards

The Public Consultation Document suggests that the facilities at the Glashieburn site could be improved to the standard of a 3R school. The misleading statement in the report states:

“The building surveyor identified costs associated with repair, maintenance and replacement works which would be required to bring the school up to a standard of the 3Rs schools when handed over to the Council for occupancy.

For Glashieburn School, this equated to £2.5 million. Not all of this would be required imminently but over the period of time, this would require to be invested in the school.”

In fact, the £2.5 million is only to bring the building up to modern conditions, not standards. Even if the funding was available, with such a small site, there is no space for such developments to be achieved. Therefore Burst Primary will be immediately £2.5 million below modern conditions.

If we compare to the 3Rs facilities, that have truly flexible options, there is massively more space. With the roll at the proposed number of 430 + nursery, Burst Primary will never have these flexible learning spaces:

3Rs Facility	Area (m ²)	Percentage versus our 41m ²
Class Room with partition deployed	63 approx.	154%
Class Room and its dedicated activity area	72.7	177%
Above + class's share of the learning corridor	85.5 approx.	209%
Above + full width of the learning corridor	108 approx.	263%



14.0 | 25 YEAR PLAN

Burst Primary is simply not a 25 year solution

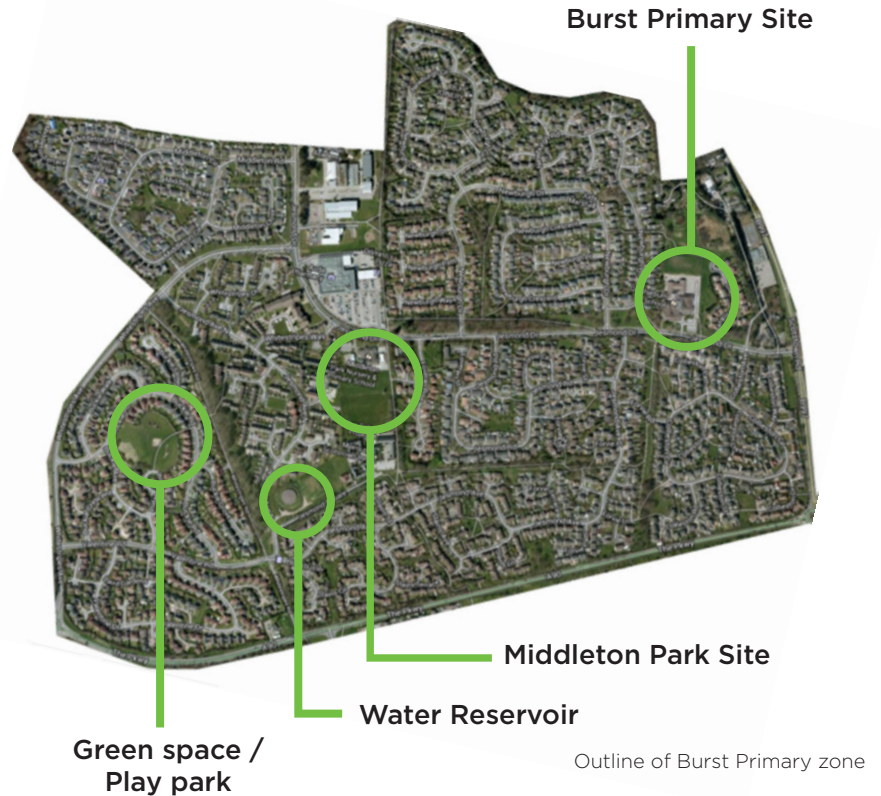
The Convener of Education, Culture and Sport Committee Councillor Jenny Laing said at the start of the process:

66 We have to ensure that the educational provision within the city is the best it can possibly be. In order to achieve this it is essential that we draw up a strategy that provides clear direction and vision for the next 20 to 25 years. 99

The proposal to form Burst Primary is not a 25 year plan. There is no educational benefit now or in the future. It will only lead to massive problems.

If the proposal to close Middleton Park and Glashieburn is approved, it will inevitably be followed by further housing development on Middleton Park site.

The map illustrates that this will leave no other area to construct a school.



Burst Primary will not last 25 years so what is the long term plan for our area?

15.0 | TO CLOSE

Burst Primary is **NOT** fit for purpose

The size of the school and playground is completely inadequate for the number of children involved.

Aberdeen City Council's proposal:

- **Is illegal**

Educational benefit in closing Middleton Park and Glashieburn has not been proven in accordance with Section 3 of the Schools (Consultation) (Scotland) Act 2010.

- **Has no rational justification**

There is no explanation as to why the Grandhome development should mean a need to change.

- **Is a disguised effort at cost-cutting**

This is wrong, especially as our schools cost well below the Aberdeen average.

- **Has no support**

We have yet to speak to anybody that supports the proposal. The Council's own officers even seem unable or unwilling to defend it.

The plans should be terminated with immediate effect.





School buildings and facilities are far more than just part of the supporting cast for Curriculum for Excellence.

They are at the heart of the whole philosophy and approach to effective learning and teaching and play the fullest part in helping to achieve change for the better.

**Building Better Schools:
Investing in Scotland's future. Scottish Government 2009**

