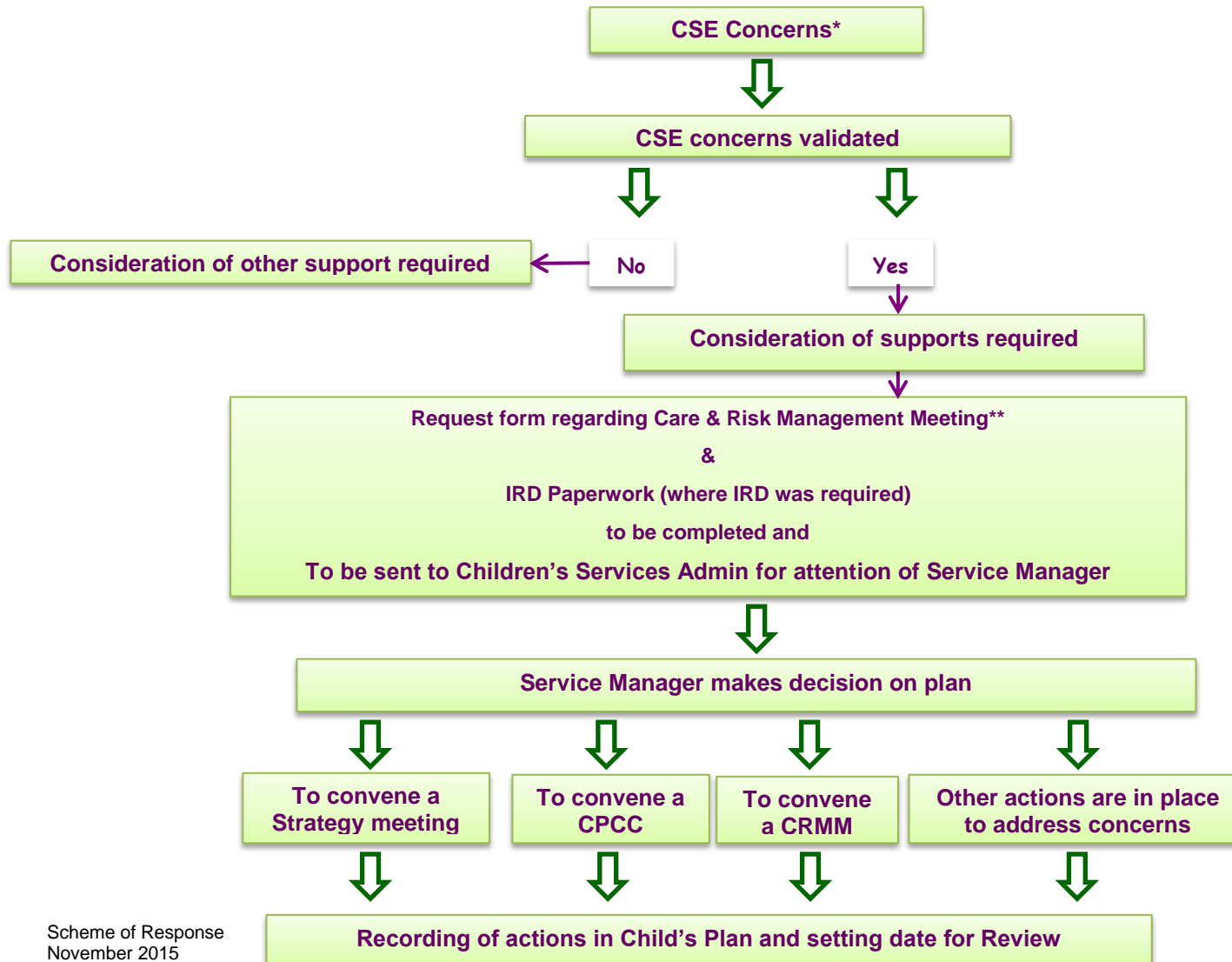




SCHEME OF RESPONSE TO CHILD SEXUAL EXPLOITATION



Notes

* IRD to be held (where appropriate)
 IRD paperwork has been revised to include CSE concerns, and allowing consideration of the need for a Care and Risk Management Meeting. IRD template paperwork will also consider if strategy meeting will be required.
 ** See Care & Risk Management Procedure on the Zone

- Minute of CRMM to become a Care Doc
- Meetings held should include at least one member of staff who have undertaken ACC, CSE Training