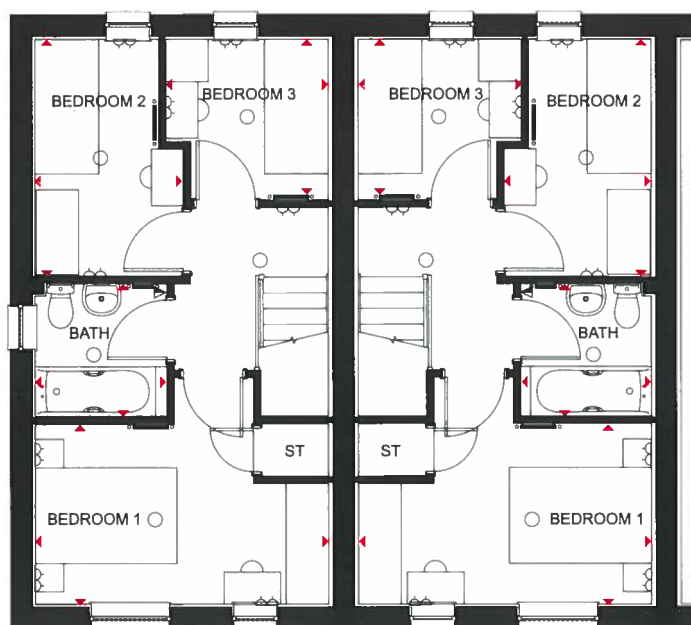


### Ground Floor

Lounge	4280 x 3090mm	14'1" x 10'2"
Kitchen/ Dining Room	3578 x 2955mm	11'9" x 9'8"
WC	1765 x 1088mm	5'9" x 3'7"

(Approximate dimensions)



### First Floor

Bedroom 1	4147 x 2535mm	13'7" x 8'4"
Bedroom 2	3340 x 2093mm	10'11" x 6'10"
Bedroom 3	2298 x 2269mm	7'6" x 7'5"
Bathroom	1868 x 1860mm	6'2" x 6'1"

(Approximate dimensions)

<b>KEY</b>	○ Light fitting	▲ T.V. aerial socket	B Boiler	f/f Fridge/freezer space
	◻ Electric socket	▲ Shaver socket	ST Store	◄► Dimension location
	◀ Telephone outlet point	— Radiator	wm Washing machine space	

[barratthomes.co.uk](http://barratthomes.co.uk)