



Aberdeen Crematorium

Memorial Garden Improvement Works

We are about to undertake a number of improvements to the memorial garden at Aberdeen Crematorium. The bereavement support charities MISS (Miscarriage Support Charity) and SANDS have generously donated funds to allow the creation of additional memorial space to the west of the current memorial garden. This additional space will be the first phase of works to improve the Memorial Garden and is scheduled to begin in June 2023. This initial work will include a new accessible tarmac footpath, timber pergola, hedging and perimeter fencing. The design of this additional space has been in collaboration with representatives from MISS and SANDS. The initial works are indicated in Plan 1 below. The further works shown including planting is scheduled to follow.

Plan 2 below is indicative of the proposed second phase of works which is scheduled to include removing the uneven granite flagstones and steps and replacing with an accessible tarmac footpath to the Chapel of Remembrance building. Other proposals are the addition of a tarmac footpath to join up the two memorial planters and the current memorial benches placed along this new accessible footpath. Also included is a new timber pergola to replace the current one and additional hedging and conifers planted. It is also proposed to clean the Chapel building, benches and the memorial planters. It is anticipated that this proposed second phase of works would be completed by 31 May 2024.

Please note that any additional seats provided will not be available to purchase as a memorial. Memorial options including wall and planter plaques in the Memorial Garden can be ordered through the Council's website www.aberdeencity.gov.uk and searching for 'Memorials'.

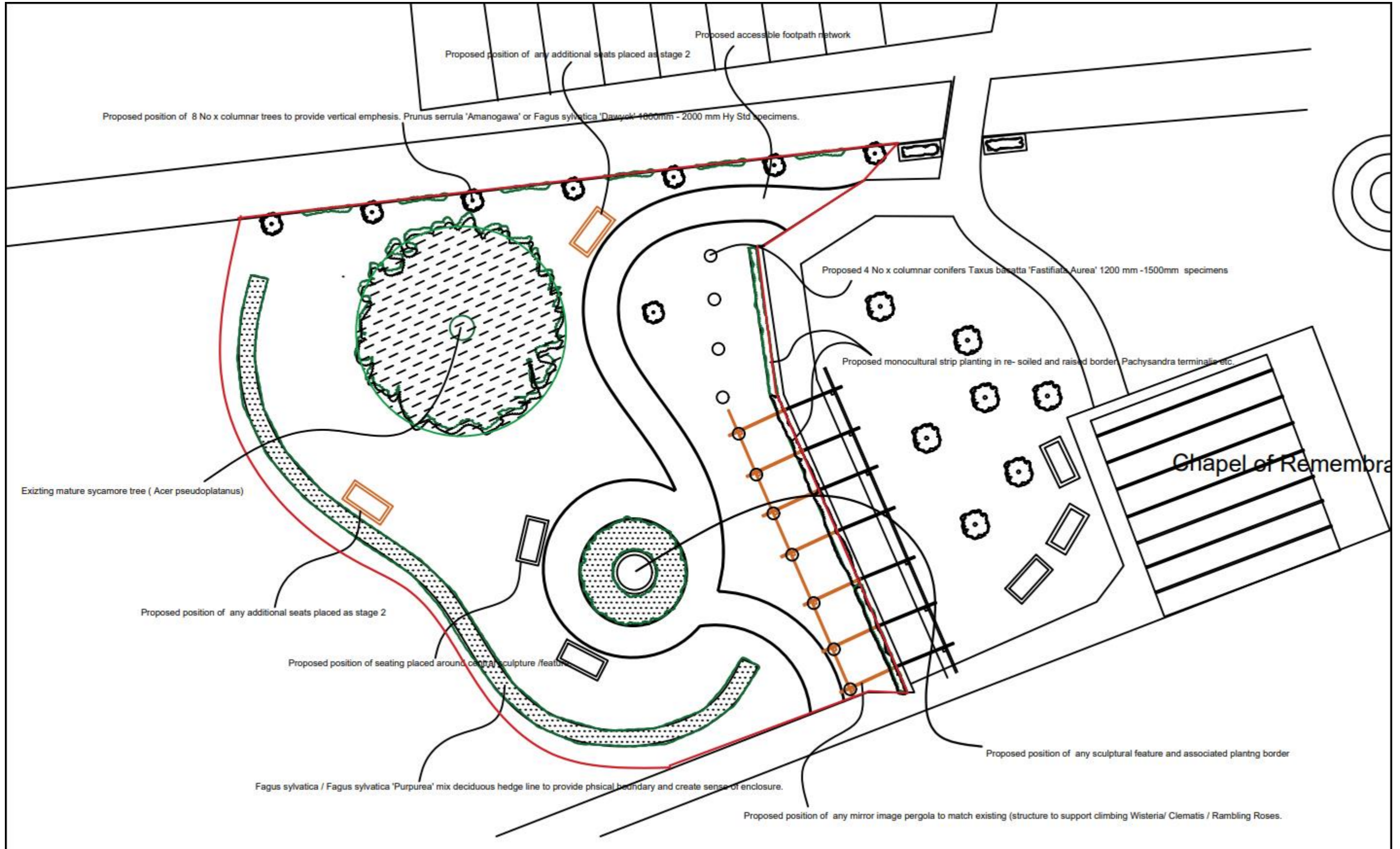
We would be happy to receive feedback on the above proposals. Please send comments/feedback to:

Crematorium Manager
Aberdeen Crematorium
Skene Road

Aberdeen AB15 8PT or

Email: AberdeenCrematorium@aberdeencity.gov.uk

Plan 1



Plan 2

