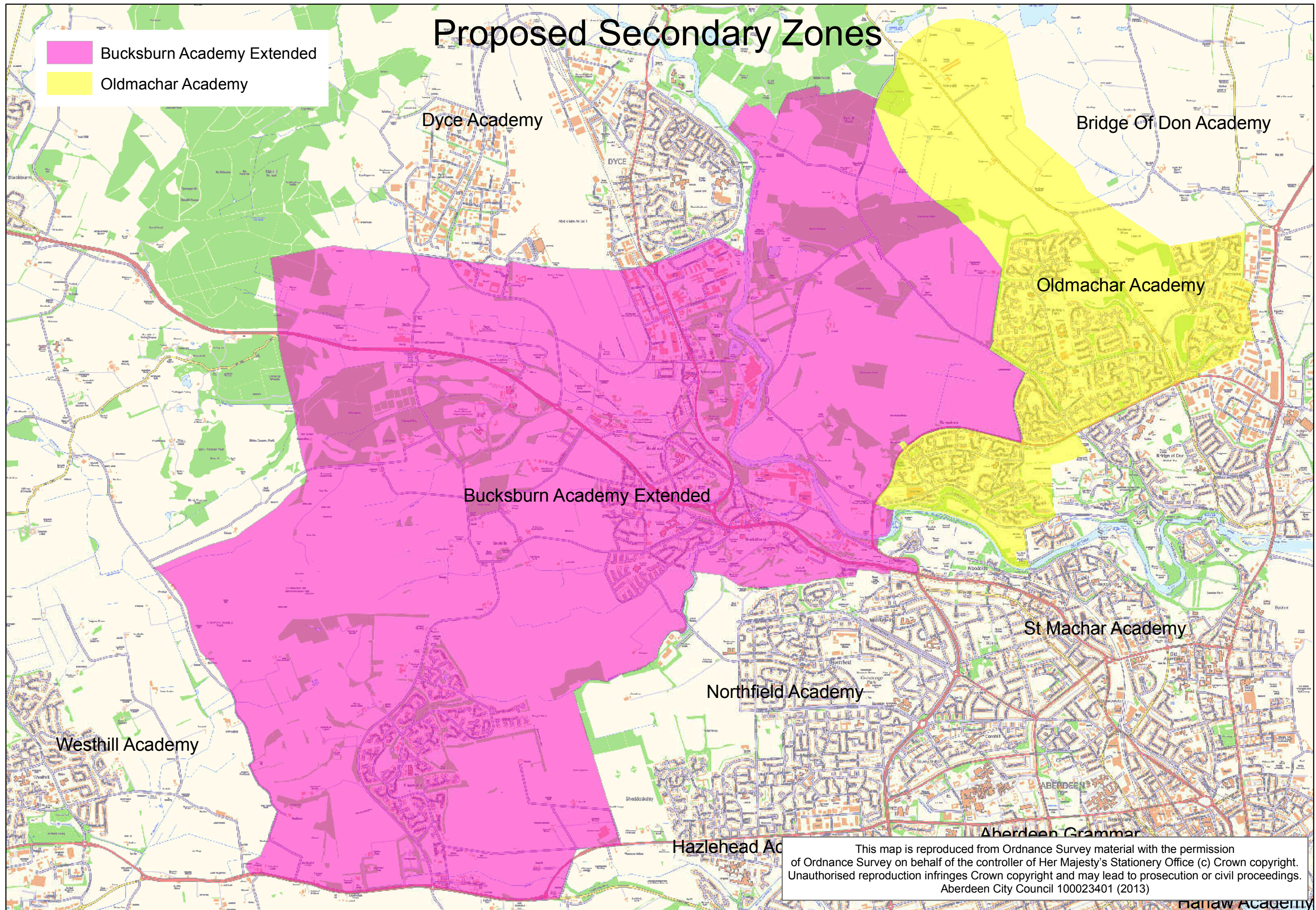


# Proposed Secondary Zones

- Bucksburn Academy Extended
- Oldmachar Academy



This map is reproduced from Ordnance Survey material with the permission of Ordnance Survey on behalf of the controller of Her Majesty's Stationery Office (c) Crown copyright. Unauthorised reproduction infringes Crown copyright and may lead to prosecution or civil proceedings. Aberdeen City Council 100023401 (2013)