

# EARWIGS

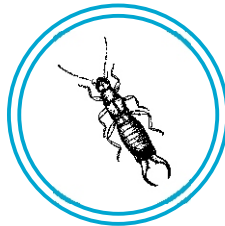
(forky tails)

## Pest Control Factsheet 5

### GENERAL

- The name earwig undoubtedly originates from the unfounded superstition that earwigs purposely crawl into ears and may bore into the brain.
- There are over 1300 known species of earwig only 4 of which are found in Britain.
- Earwigs are easily identified by the “pincers” which protrude from the end of the abdomen.
- Males usually have strongly curved “pincers” as opposed to the thinner straighter “pincers” of females.

ACTUAL SIZE



Male earwig

### THE EUROPEAN EARWIG (FORFICULA AURICULARIA)

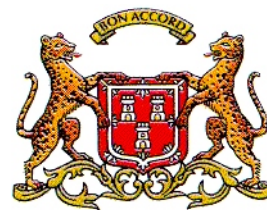
- This species which is commonly seen in Britain is about  $\frac{5}{8}$  inch (16mm) long and is dark reddish brown in colour.
- It is omnivorous and will eat practically anything although it will normally feed on green plants.
- It is most active at night and will hide in cracks and crevices during the day.

### NON CHEMICAL CONTROL

- Remove plant debris from around buildings
- Repair drainage defects which lead to moist areas which are attractive to earwigs
- Open “dry” areas around buildings which have surfaces such as gravel or concrete are unattractive to earwigs.

### CHEMICAL CONTROL

- There are a variety of insecticide formulations which may be used. These may be obtained from outlets such as Garden Centres.
- When using insecticides, always follow the instructions.



ABERDEEN  
CITY COUNCIL

### FOR FURTHER INFORMATION CONTACT

Environment & Property Department,  
St Nicholas House, Broad Street,  
Aberdeen. AB10 1BX

### PUBLIC HEALTH SIGNIFICANCE

Minimal  Significant

TELEPHONE - (01224) 523440