



This paper is produced by the Research and Information Team, and provides an update on the Aberdeen City Economy. Data used in this document is taken from Nomis, the official labour market statistics. Nomis is a service provided by the Office for National Statistics (ONS), to give free access to the most detailed and up-to-date UK labour market statistics from official sources. Claimant count and DWP benefits data analysed in this monthly economic update. Data in this document relates to April 2015.

1. Monthly Labour Market data, April 2015

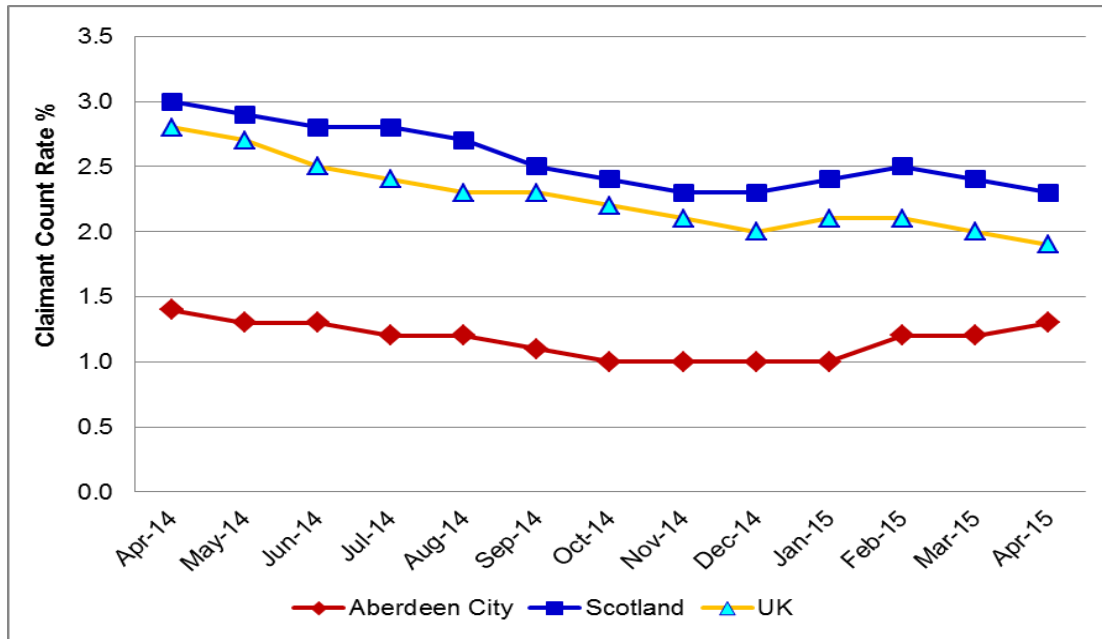
Indicator	Aberdeen City			Scotland			UK		
	Male	Female	Total	Male	Female	Total	Male	Female	Total
Jobseekers Allowance (JSA) claimant rate (% of working age population)	1.7%	0.8%	1.3%	3.3%	1.4%	2.3%	2.5%	1.4%	1.9%
Total number of JSA claimant	1,411	596	2,007	55,515	25,117	80,632	514,336	281,631	795,967
Number of claimants, claiming JSA for more than 6 months	280	95	370	22,305	9,500	31,805	223,025	119,940	342,965
Rate of JSA claiming for more than 6 months (% of JSA claimants)	0.3%	0.1%	0.2%	1.3%	0.5%	0.9%	1.1%	0.6%	1.8%

Source: nomisweb.co.uk, claimant count with rates and proportions

NB: Due to rounding sums may not add up

- ❖ 2,007 people in Aberdeen claimed Job Seekers Allowance (JSA) in April 2015; this is equivalent to 1.3% of the working age population (based on NRS mid-2013 population estimates).

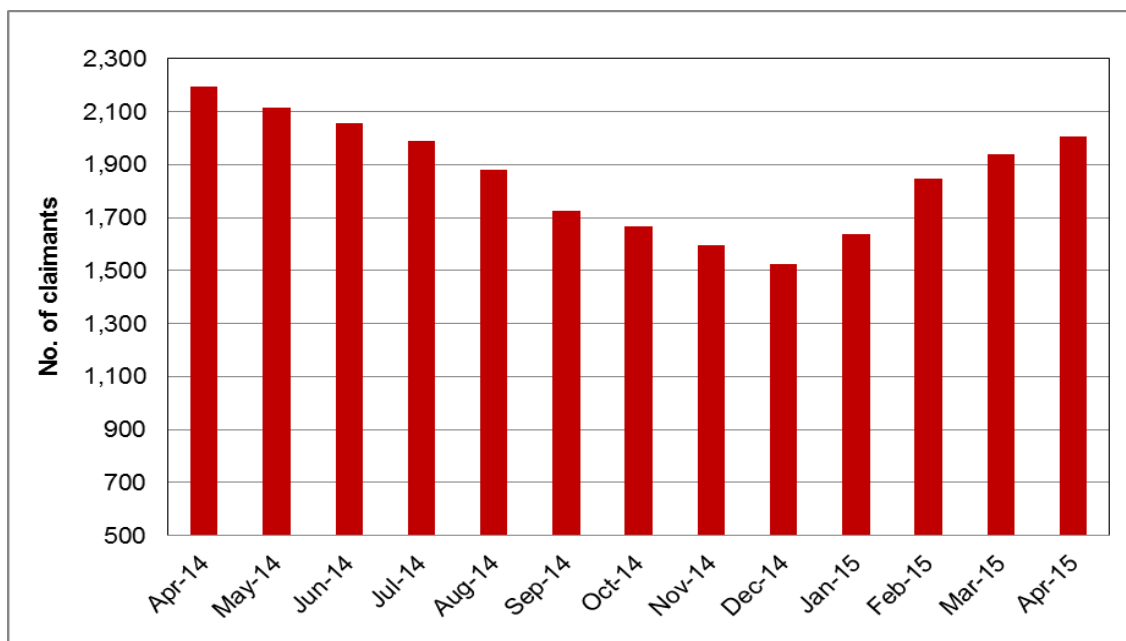
1.1 Jobseekers Allowance (JSA) claimant rate, Aberdeen City, Scotland & UK



Source: nomisweb.co.uk, claimant count with rates and proportions

- ❖ Aberdeen City's claimant rate increased from 1.2% in March 2015 to 1.3% in April 2015. The Scottish rate also increased by 0.1 percentage points from the previous month, while in the United Kingdom a drop of 0.1 percentage points was noticed for the same time period.

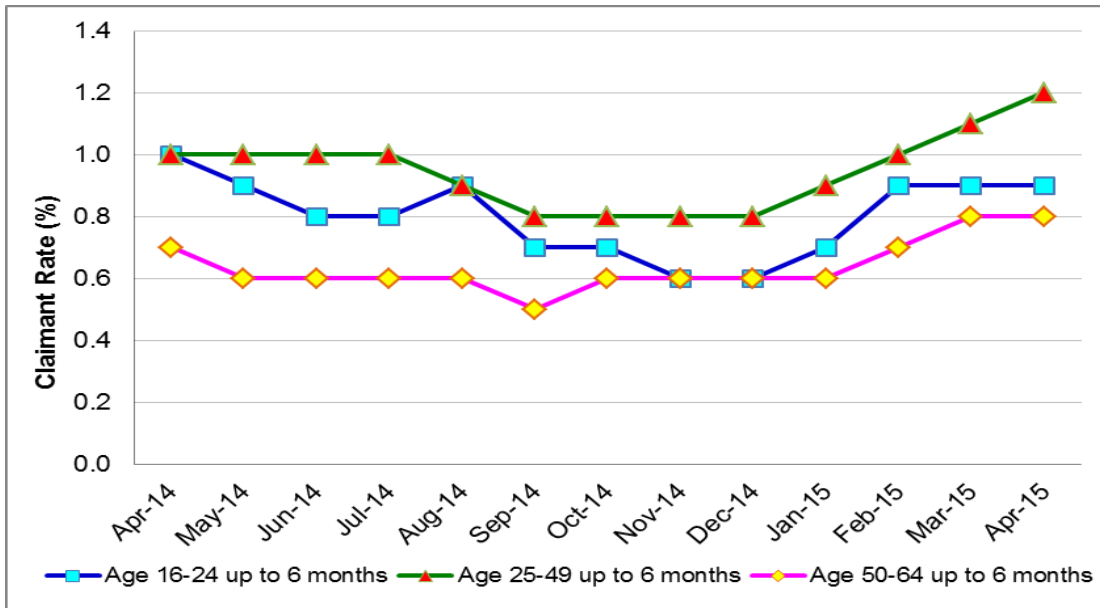
1.2 Total JSA claimants in Aberdeen City



Source: nomisweb.co.uk, claimant count with rates and proportions

- ❖ Since April 2014 the number of JSA claimants in Aberdeen City has declined by 187 people from 2,194 in April 2014 to 2,007 in April 2015. However, between March 2015 and April 2015, the number of JSA claimant in Aberdeen City increased by 67.

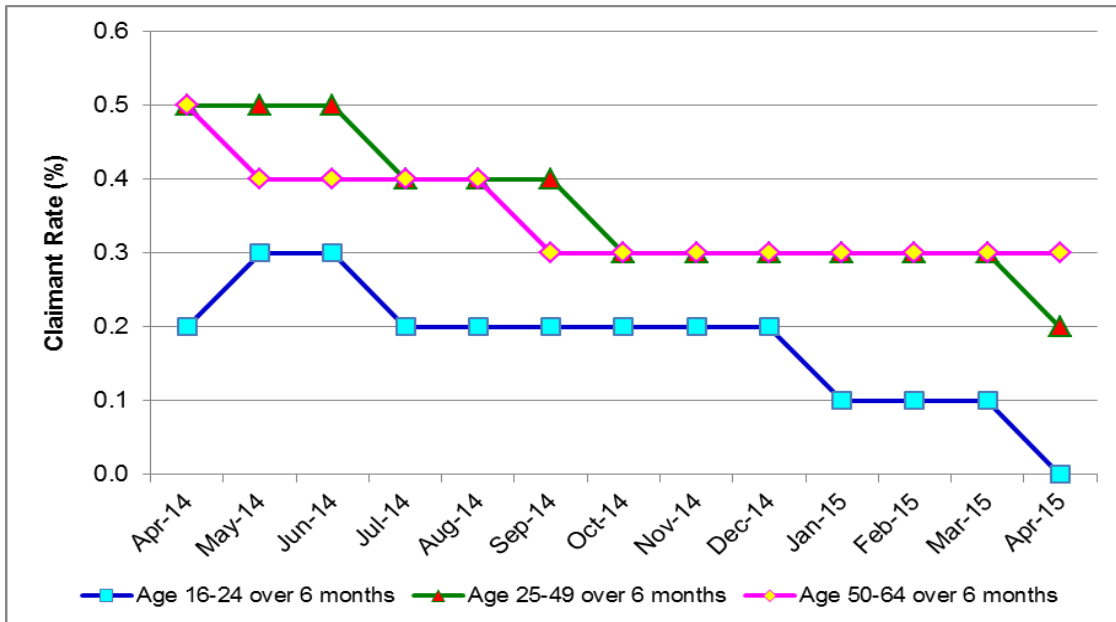
1.3 JSA claimant rate by age group and duration, claiming up to 6 months in Aberdeen City



Source: nomisweb.co.uk, claimant count by age duration with proportions

- ❖ JSA claimant rate of 25-49 year olds claiming for a period of up to 6 months increased by 0.1 percentage points between March and April 2015. All other claimants aged 16-24 and 50-64, remained steady between March and April 2015.

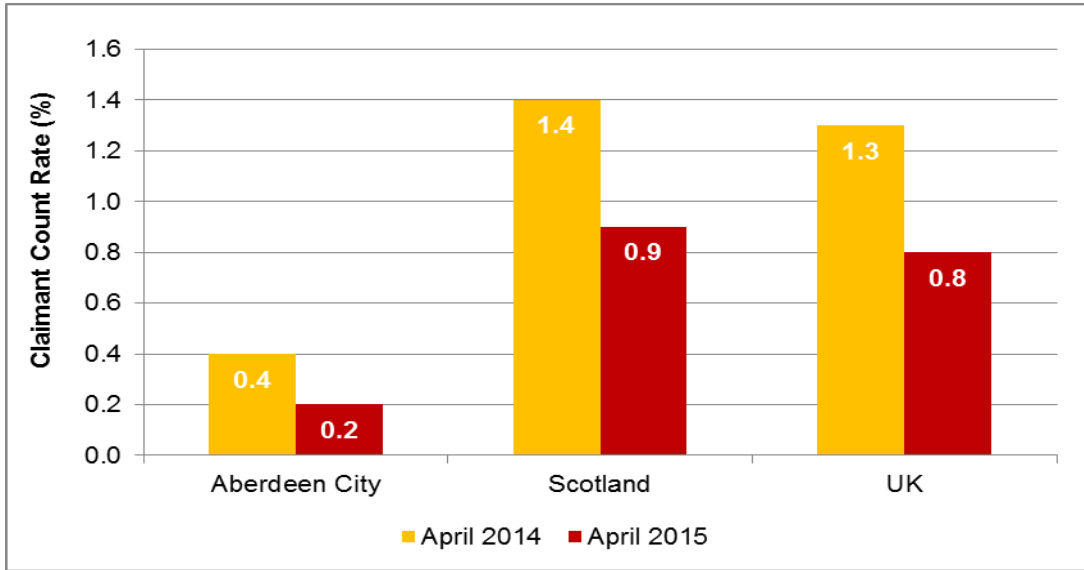
1.4 JSA claimant rate by age group and duration, claiming over 6 months in Aberdeen City



Source: nomisweb.co.uk, claimant count by age duration with proportions

- ❖ The rate for 16-24 year olds and 25-49 year olds claiming over 6 months decreased by 0.1 percentage points between March and April 2015. At the same period 50-64 year olds claiming over 6 months remained the same.

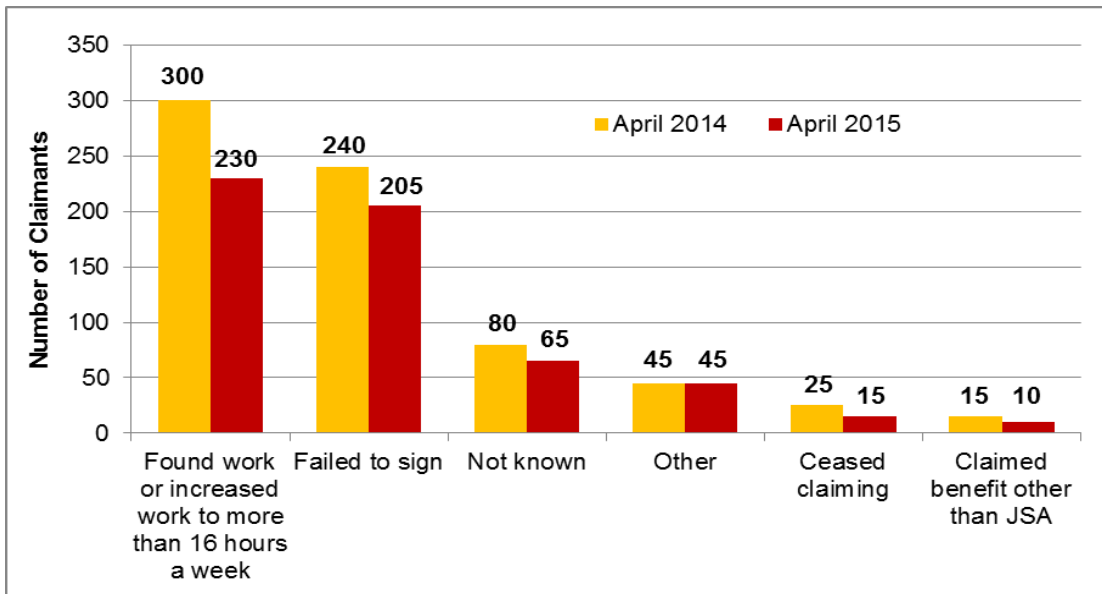
1.5 JSA claimant rate (6 months+), Aberdeen City, Scotland & UK



Source: nomisweb.co.uk, claimant count by age duration with proportions

- ❖ JSA claimant rates for people aged 16-64 years claiming over 6 months have fallen between April 2014 and April 2015 across Aberdeen City, Scotland and the UK. Aberdeen City is 1.0 percentage points below the Scottish rate and 0.9 percentage points below the UK rate. 370 people were claiming JSA for more than 6 months in Aberdeen City in April 2015, down from 670 in April 2014.

1.6 Reasons for ending JSA claims (Off-flow), Aberdeen City



Source: nomisweb.co.uk, claimant off-flows – reasons, age and duration

- ❖ The number of people with a “failed to sign” destination is high in Aberdeen City, although a 15% fall was noticed since April 2014. 230 people found work or increased work to more than 16 hours a week in April 2015 which is fewer than the 300 in April 2014.

1.7 JSA claimants in Aberdeen City by 2013 electoral wards, April 2015

2013 Electoral wards	No. of Claimants	% of resident population aged 16-64 based on mid-2013 population estimates
Hilton / Stockethill	217	2.0%
Northfield	216	1.9%
Tillydrone / Seaton / Old Aberdeen	264	1.9%
Torry / Ferryhill	322	1.9%
George St / Harbour	231	1.5%
Kingswells / Sheddocksley	122	1.3%
Kincorth / Loirston	124	1.2%
Midsocket / Rosemount	124	1.1%
Dyce / Bucksburn / Danestone	106	0.9%
Airyhall / Broomhill / Garthdee	74	0.7%
Bridge of Don	78	0.6%
Hazlehead / Ashley / Queens Cross	83	0.6%
Lower Deeside	46	0.5%
Aberdeen City	2,007	1.3%

Source: nomisweb.co.uk, claimant count by 2013 electoral wards

- ❖ Rates in the City vary from a high of 2.0% in Hilton/Stockethill ward to a low of 0.5% in Lower Deeside ward. Although Hilton/Stockethill ward has the highest claimant rate, Torry/Ferryhill ward has the highest number of claimants in Aberdeen City.

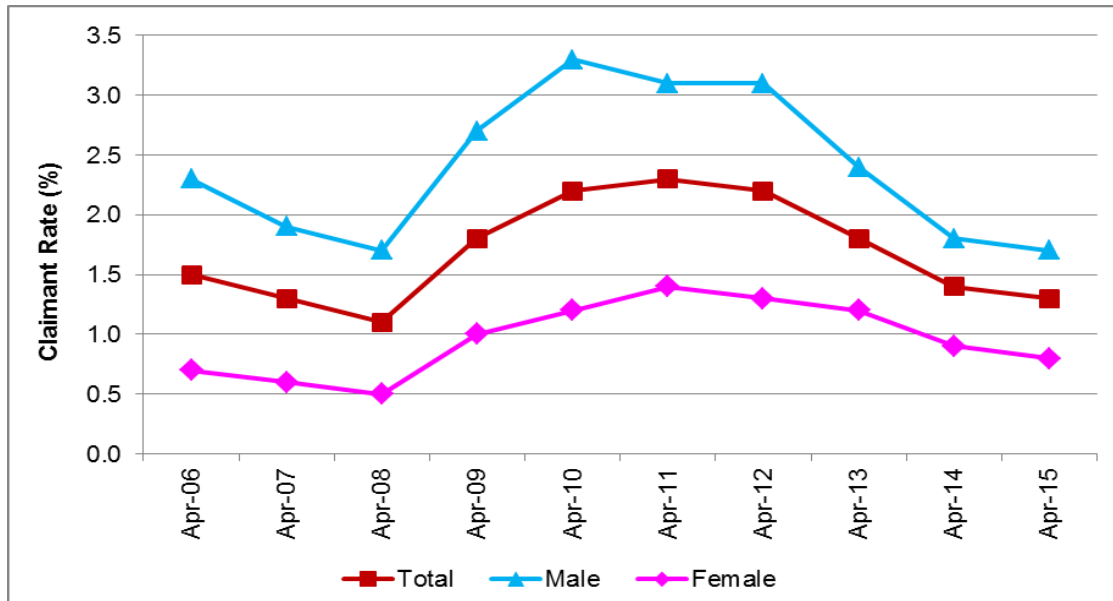
2. Quarterly Labour Market Data (JSA Claimants)

Department for Work and Pensions (DWP) benefits data is provided on a quarterly basis with a six month time lag. This data provides a snapshot of benefit claimants at particular points in time. The number of working age DWP benefit claimants in Aberdeen City dropped to 1,440 (0.9% of all working age people) in the quarter to November 2014. This was down from 1,630 (1.0%) during the previous quarter.

	Aug-14		Nov-14	
	Number	Rate	Number	Rate
Aberdeen City	1,630	1.0%	1,440	0.9%
Aberdeenshire	910	0.6%	870	0.5%
Dundee	3,510	3.5%	3,130	3.2%
Edinburgh	6,680	2.0%	5,770	1.7%
Glasgow	15,050	3.6%	14,170	3.4%
Scotland	81,650	2.4%	74,150	2.1%

Source: nomisweb.co.uk, benefit claimant

3. Unemployment Trend for last 10 years



Source: nomisweb.co.uk, claimant count with rates and proportions

- ❖ In the period since April 2006, the claimant count in Aberdeen City has fluctuated between a low of 1,678 in April 2008 and a high of 3,577 in April 2011. The impact on the claimant count of the post-2008 financial crisis and economic recession may be the reason for the fluctuation. In the three-year period from April 2008 to April 2011, the number of claimants in Aberdeen City more than doubled. However, the total has fallen since then. The same trend was noticed in Aberdeen City male and female claimants.

For more information on this paper, please contact:

Kamrun Chowdhury
Research Officer
Research and Information
Office of Chief Executive
Aberdeen City Council
1st Floor, Old Town House
Broad Street
Aberdeen, AB10 1FY
☎ 01224 523866
✉ kchowdhury@aberdeencity.gov.uk